



### Application

- Drainage of wastewater from the attenuation tank, purifying tank and sewage tank in water treatment plant
- Drainage of waste water containing fibrous additives from leather factory and food processing factory
- Sewage management, accumulated water, septic tank, stock farm
- Pumping sewage form hotels, restaurants, schools and public buildings

### Pump

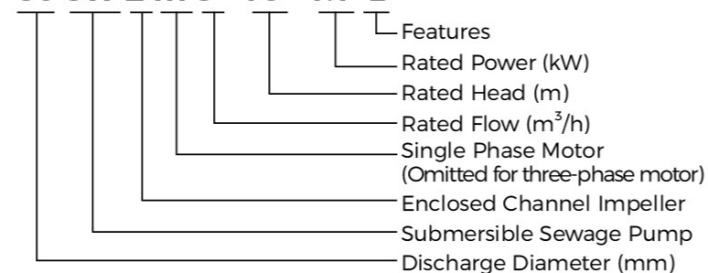
- High-efficiency & anti-clogging enclosed channel impeller
- Flexible installations with hoses, pipes or quick-coupling systems
- Float switch as standard accessory for single phase (≤1.1 kw)
- Cable Length: 10m
- Double-end mechanical seal
- Stainless steel welded shaft
- Liquid temperature: 0 - 40 °C
- Liquid PH value: 4 - 10
- Max. immersion depth: 10 m

### Motor

- Frequency/Pole number: 50 Hz/2
- Insulation class: F
- Enclosures class: IP68
- Bearing: Ball type

### Identification Codes

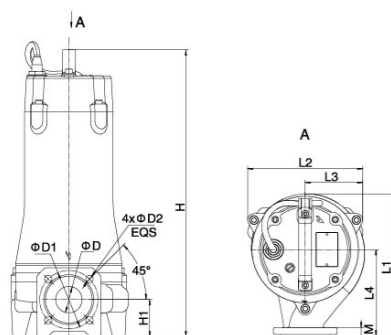
**50 SW E m 8 - 16 - 1.1 L**



### Technical Data

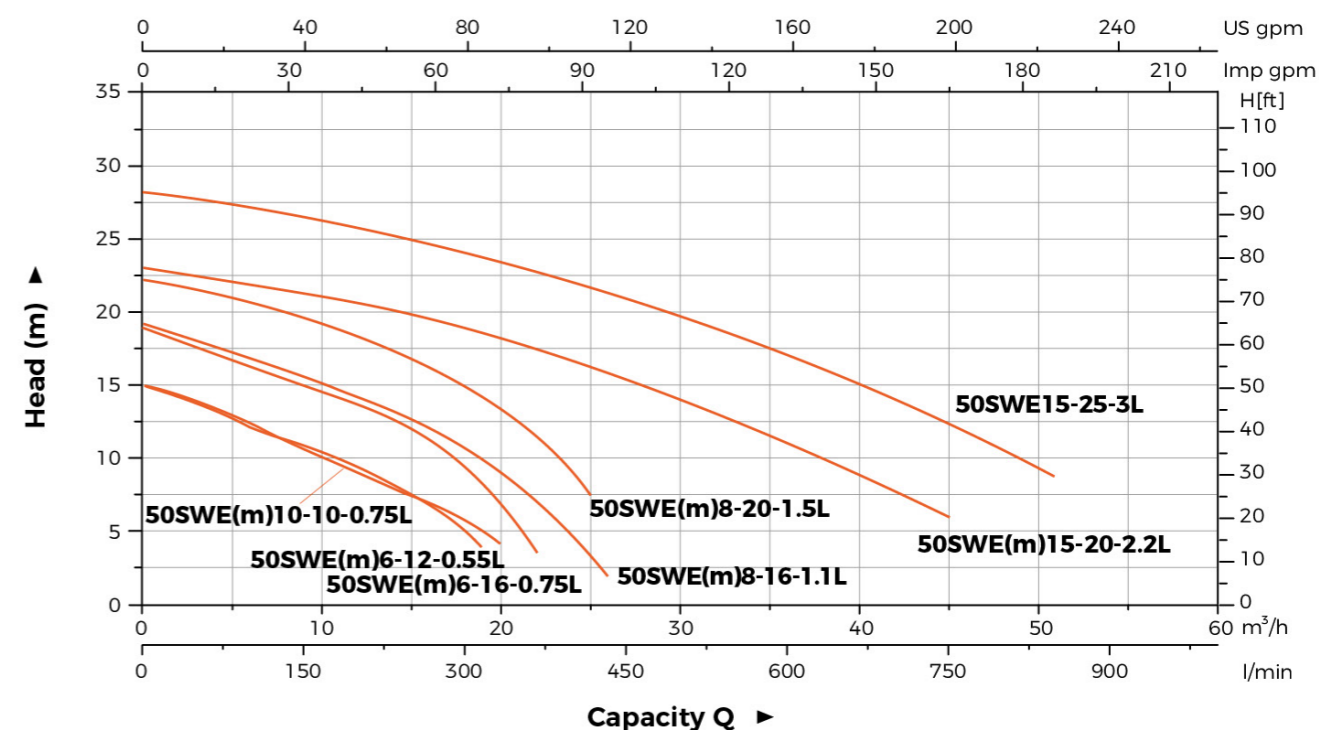
Model		Discharge	Power		Rated flow	Max. flow	Rated head	Max. head	Max. Solid Dia
Single Phase	Three Phase	mm (inch)	kW	HP	m³/h	m³/h	m	m	mm
50SWE m 6-12-0.55L	50SWE6-12-0.55L	50 (2")	0.55	0.75	6	19	12	15	20
50SWE m 6-16-0.75L	50SWE6-16-0.75L	50 (2")	0.75	1	6	22	16	19	20
50SWE m 10-10-0.75L	50SWE10-10-0.75L	50 (2")	0.75	1	10	20	10	15	20
50SWE m 8-16-1.1L	50SWE8-16-1.1L	50 (2")	1.1	1.5	8	26	16	19	15
50SWE m 8-20-1.5L	50SWE8-20-1.5L	50 (2")	1.5	2	8	25	20	22	15
50SWE m 15-20-2.2L	50SWE15-20-2.2L	50 (2")	2.2	3	15	45	20	23	25
-	50SWE15-25-3L	50 (2")	3	4	15	51	25	27	25

### Dimension



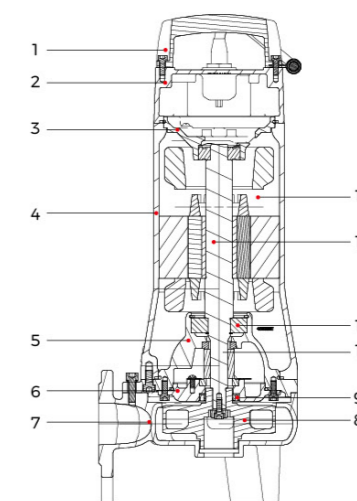
Model	L1 (mm)	L2 (mm)	L3 (mm)	L4 (mm)	H(mm)		H1 (mm)	D (mm)	D1 (mm)	D2 (mm)	M (mm)
					1-	3-					
50SWE(m)6-12-0.55L	212	184	96	120	461	461	65	45	110	14	14
50SWE(m)6-16-0.75L					479	479					
50SWE(m)10-10-0.75L	210	191	135	135	570	529	70	50	14	16	16
50SWE(m)8-16-1.1L	223				571	530					
50SWE(m)8-20-1.5L	227	221	112	163	-	561	70	50	14	16	16
50SWE(m)15-20-2.2L	268				-	561					
50SWE15-25-3L	268	221	112	163	-	561	70	50	14	16	16

### Hydraulic Performance Curves



### Material Table

No.	Part	Material
1	Handle	ZG45
2	Upper cover	HT200
3	Upper bearing seat	HT200
4	Motor body	HT200
5	Oil chamber	HT200
6	Pump cover	HT200
7	Pump body	HT200
8	Impeller	HT200
9	Oil seal	
10	Mechanical seal	Upper: Sic/Carbon Lower: Sic/Sic
11	Bearing	
12	Rotor	
13	Stator	



### Package Information

Model	GW (kg)		L (mm)	W (mm)	H (mm)	Quantity (PCS/20'TEU)
	1-	3-				
50SWE(m)6-12-0.55L	24.7	24	746	254	286	544
50SWE(m)6-16-0.75L	26	25.3	746	254	286	544
50SWE(m)10-10-0.75L	25.8	25	746	254	286	544
50SWE(m)8-16-1.1L	33.6	31.7	749	289	368	354
50SWE(m)8-20-1.5L	43.2	38.4	924	284	363	294
50SWE(m)15-20-2.2L	44.9	46.3	924	284	363	294
50SWE15-25-3L	-	49.5	874	284	363	316