

Submersible Pumps

6" Stainless Steel 18 m³/h Specifications

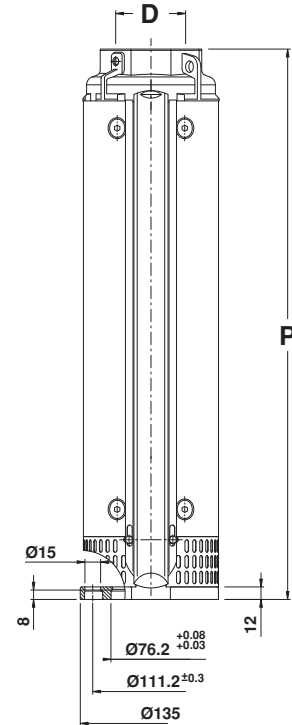
Dimension Information

kW	Stages	D*	Motor Size	P* (mm)	Weight (kg)
3.7	6	2.5"	6"	431	12
5.5	9	2.5"	6"	543.5	15
7.5	12	2.5"	6"	656	17
9.3	15	2.5"	6"	768.5	19
11	18	2.5"	6"	881	215
15	21	2.5"	6"	993.5	24
15	22	2.5"	6"	1.31	25
15	24	2.5"	6"	1106	27
18.5	28	2.5"	6"	1256	30
18.5	30	2.5"	6"	1331	32
22	33	2.5"	6"	1443.5	34
22	36	2.5"	6"	1556	37
30	39	2.5"	6"	1668	39
30	42	2.5"	6"	1853	42

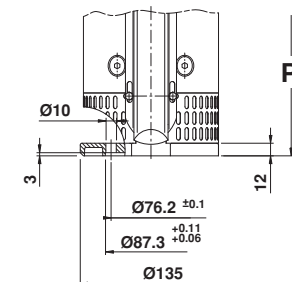
*Note: D = Discharge, P = Pump Length

Parts Description	Material	
	Type	AISI
Outer case with motor adapter	Stainless Steel	304
Discharge head with built-in check valve	Stainless Steel	304
Sealing O-ring	Nitrile Rubber (NBR)	N/A
Upper bowl	Stainless Steel	304
Upper bearing bushing	Nitrile Rubber (NBR)	N/A
Upper journal sleeve	Stainless Steel w/ ceramic coating	329
Pump shaft	Stainless Steel	431
Motor coupling	Stainless Steel	431/329
Diffuser	Stainless Steel	304
Floating neck ring	Teflon (PTFE)	N/A
Secondary bearing bushing	Nitrile Rubber (NBR)	N/A
Secondary journal sleeve	Stainless Steel	304
Impeller	Stainless Steel	304
Cable guard	Stainless Steel	316
Suction strainer	Stainless Steel	316
Insert locking outer case	Stainless Steel	316
Up-thrust washer	Stainless Steel	316
Up-thrust disc	Teflon (PTFE)	N/A
Screws and washers	Stainless Steel	316

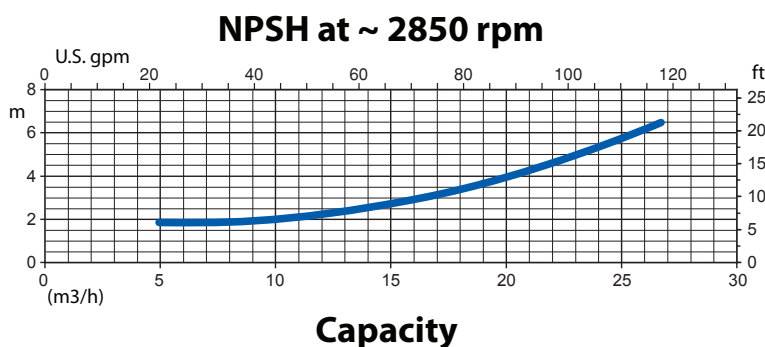
Dimensions



6" Motor Adapter



4" Motor Adapter



	Diameter with 1 cable cover	Diameter with 2 cable cover	External Motor Diameter
Pump 6"	141	145	/
Pump 6" with motor 4"	141	/	95.25
Pump 6" with motor 6"	144	146.5	136.5

*Note: All units are in millimeters