

# Submersible Pumps

## 6" Stainless Steel 60 m<sup>3</sup>/h Specifications

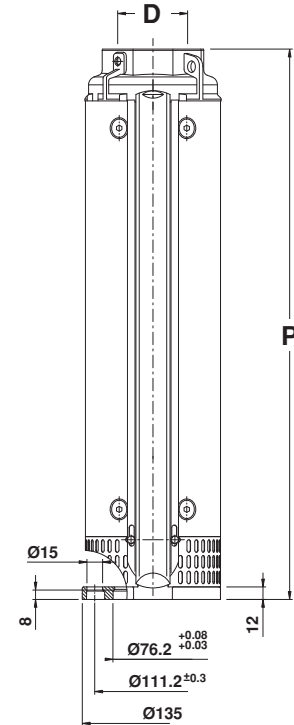
### Dimension Information

kW	Stages	D*	Motor Size	P* (mm)	Weight (kg)
3.7	2	3"	6"	365.5	12
5.5	3	3"	6"	458.5	14
7.5	5	3"	6"	644.5	18
11	7	3"	6"	830.5	23
15	9	3"	6"	1016.5	28
15	10	3"	6"	1109.5	30
18.5	12	3"	6"	1295.5	35
22	14	3"	6"	1481.5	39
30	16	3"	6"	1667.5	44
30	18	3"	6"	1853.5	49
37	20	3"	6"	2040	52
37	23	3"	6"	2318	60

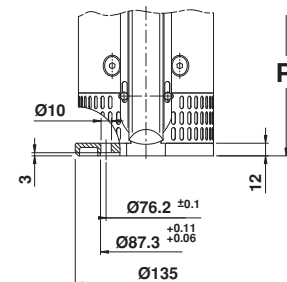
\*Note: D = Discharge, P = Pump Length

Parts Description	Material	
	Type	AISI
Outer case with motor adapter	Stainless Steel	304
Discharge head with built-in check valve	Stainless Steel	304
Sealing O-ring	Nitrile Rubber (NBR)	N/A
Upper bowl	Stainless Steel	304
Upper bearing bushing	Nitrile Rubber (NBR)	N/A
Upper journal sleeve	Stainless Steel w/ ceramic coating	329
Pump shaft	Stainless Steel	431
Motor coupling	Stainless Steel	431/329
Diffuser	Stainless Steel	304
Floating neck ring	Teflon (PTFE)	N/A
Secondary bearing bushing	Nitrile Rubber (NBR)	N/A
Secondary journal sleeve	Stainless Steel	304
Impeller	Stainless Steel	304
Cable guard	Stainless Steel	316
Suction strainer	Stainless Steel	316
Insert locking outer case	Stainless Steel	316
Up-thrust washer	Stainless Steel	316
Up-thrust disc	Teflon (PTFE)	N/A
Screws and washers	Stainless Steel	316

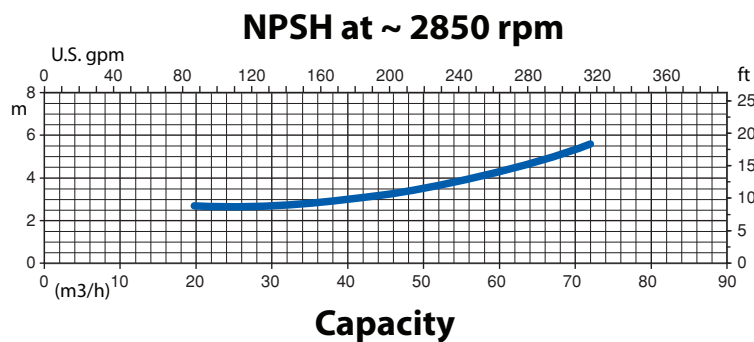
### Dimensions



### 6" Motor Adapter



### 4" Motor Adapter



	Diameter with 1 cable cover	Diameter with 2 cable cover	External Motor Diameter
Pump 6"	141	145	/
Pump 6" with motor 4"	141	/	95.25
Pump 6" with motor 6"	144	146.5	136.5

\*Note: All units are in millimeters