



Application

- Drainage of wastewater from the attenuation tank, purifying tank and sewage tank in water treatment plant
- Drainage of waste water containing fibrous additives from leather factory and food processing factory
- Sewage management, accumulated water, septic tank, stock farm
- Pumping sewage form hotels, restaurants, schools and public buildings

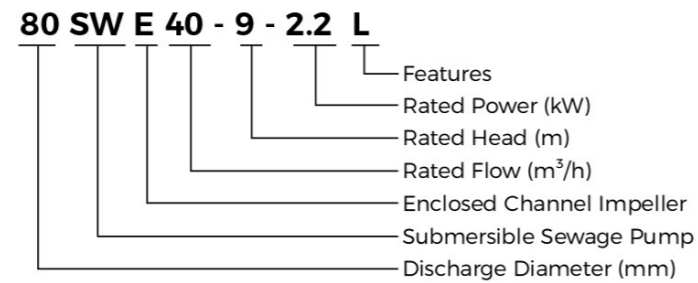
Pump

- High-efficiency & anti-clogging enclosed channel impeller
- Flexible installations with hoses, pipes or quick-coupling systems
- Double-end mechanical seal
- Stainless steel welded shaft
- Liquid temperature: 0 - 40 °C
- Liquid PH value: 4 - 10
- Max. immersion depth: 10 m

Motor

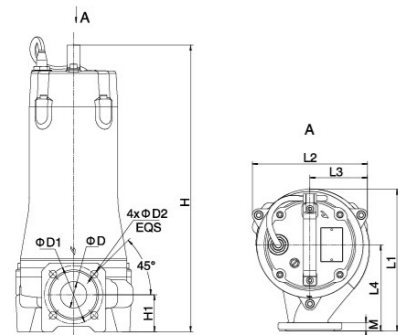
- Frequency/Pole number: 50 Hz/2
- Insulation class: F
- Enclosures class: IP68
- Bearing: Ball type

Identification Codes



Technical Data

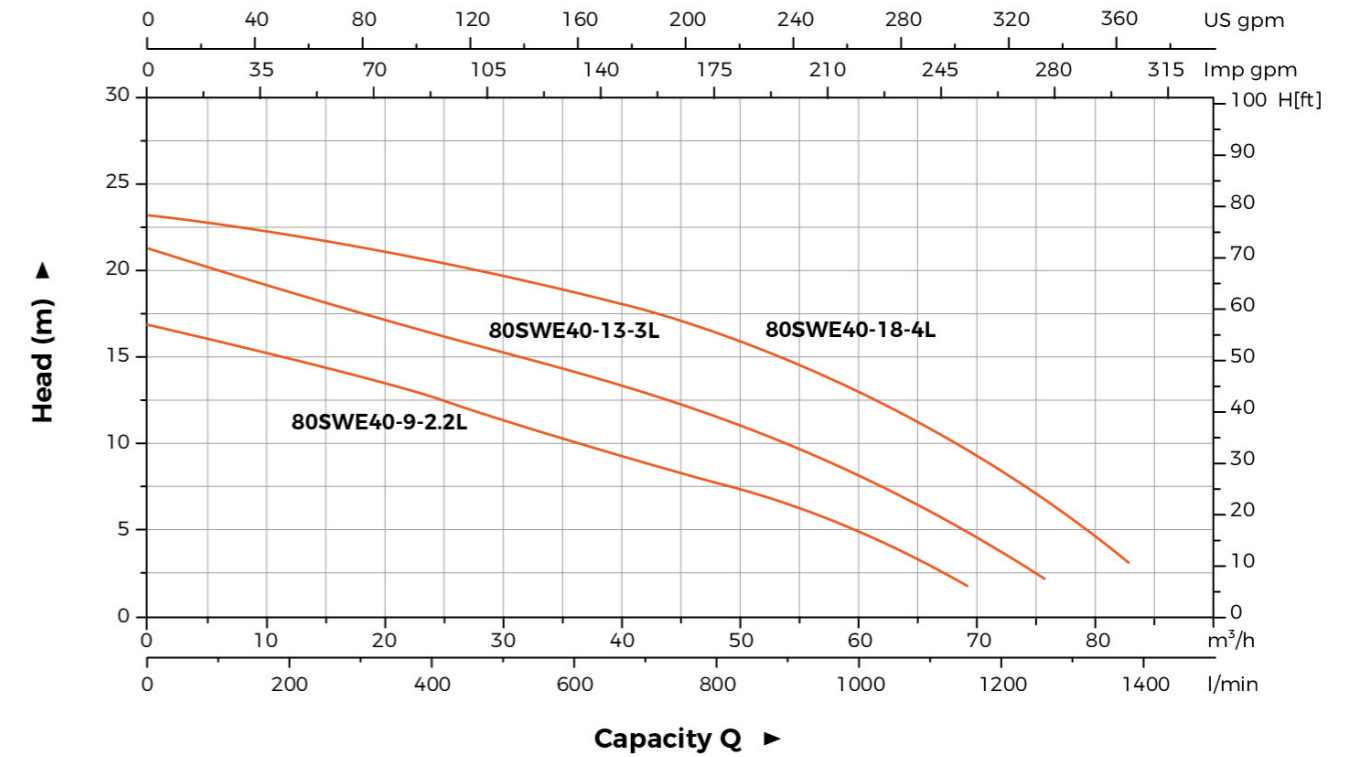
Model	Discharge	Power		Rated flow	Max. flow	Rated head	Max. head	Max. Solid Dia
	mm (inch)	kW	HP	m ³ /h	m ³ /h	m	m	mm
80SWE40-9-2.2L	80(3")	2.2	3	40	69.5	9	17	30
80SWE40-13-3L	80(3")	3	4	40	76	13	21	30
80SWE40-18-4L	80(3")	4	5.5	40	83	18	23	30



Dimension

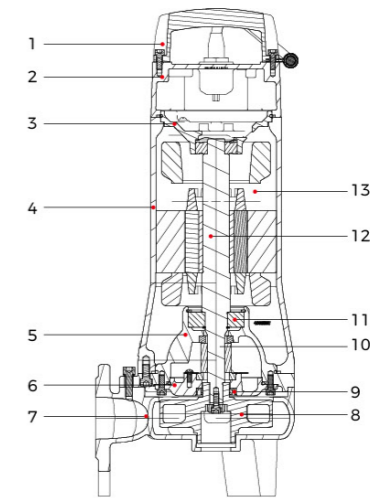
Model	L1 (mm)	L2 (mm)	L3 (mm)	L4 (mm)	H (mm)	H1 (mm)	D (mm)	D1 (mm)	D2 (mm)	M (mm)
80SWE40-9-2.2L										
80SWE40-13-3L	265	223	112	160	557	86	80	150	18	16
80SWE40-18-4L										

Hydraulic Performance Curves



Material Table

No.	Part	Material
1	Handle	ZG45
2	Upper cover	HT200
3	Upper bearing seat	HT200
4	Motor body	HT200
5	Oil chamber	HT200
6	Pump cover	HT200
7	Pump body	HT200
8	Impeller	HT200
9	Oil seal	
10	Mechanical seal	Upper:Sic/Carbon Lower:Sic/Sic
11	Bearing	
12	Rotor	
13	Stator	



Package Information

Model	GW (kg)	L (mm)	W (mm)	H (mm)	Quantity (PCS/20'TEU)
80SWE40-9-2.2L	46.4	924	284	363	294
80SWE40-13-3L	53.8	874	284	363	316
80SWE40-18-4L	56.3	874	284	363	316