

Submersible Pumps

6" Stainless Steel 27 m³/h Specifications

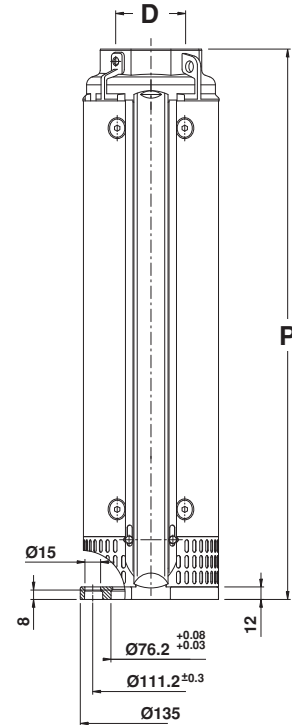
Dimension Information

kW	Stages	D*	Motor Size	P* (mm)	Weight (kg)
3	3	3"	6"	365.5	11
4	4	3"	6"	412	12
5.5	5	3"	6"	458.5	13
7.5	7	3"	6"	551.5	15
11	11	3"	6"	737.5	19
15	15	3"	6"	923.5	23
18.5	19	3"	6"	1109.5	26
22	23	3"	6"	1295.5	30
30	27	3"	6"	1481.5	34
30	31	3"	6"	1667.5	38
37	33	3"	6"	1760	40
37	36	3"	6"	1899.5	43

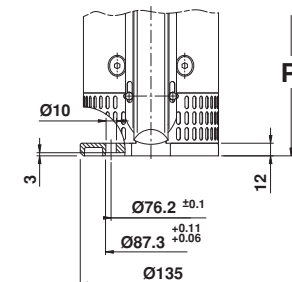
*Note: D = Discharge, P = Pump Length

Parts Description	Material	
	Type	AISI
Outer case with motor adapter	Stainless Steel	304
Discharge head with built-in check valve	Stainless Steel	304
Sealing O-ring	Nitrile Rubber (NBR)	N/A
Upper bowl	Stainless Steel	304
Upper bearing bushing	Nitrile Rubber (NBR)	N/A
Upper journal sleeve	Stainless Steel w/ ceramic coating	329
Pump shaft	Stainless Steel	431
Motor coupling	Stainless Steel	431/329
Diffuser	Stainless Steel	304
Floating neck ring	Teflon (PTFE)	N/A
Secondary bearing bushing	Nitrile Rubber (NBR)	N/A
Secondary journal sleeve	Stainless Steel	304
Impeller	Stainless Steel	304
Cable guard	Stainless Steel	316
Suction strainer	Stainless Steel	316
Insert locking outer case	Stainless Steel	316
Up-thrust washer	Stainless Steel	316
Up-thrust disc	Teflon (PTFE)	N/A
Screws and washers	Stainless Steel	316

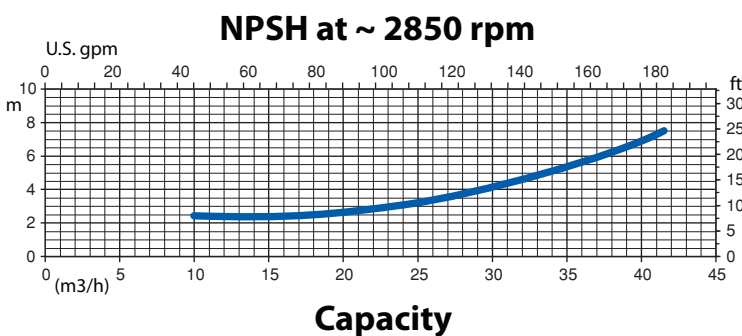
Dimensions



6" Motor Adapter



4" Motor Adapter



	Diameter with 1 cable cover	Diameter with 2 cable cover	External Motor Diameter
Pump 6"	141	145	/
Pump 6" with motor 4"	141	/	95.25
Pump 6" with motor 6"	144	146.5	136.5

*Note: All units are in millimeters