

LGP

Gasoline Water Pumps

Application

- To transfer clean water with liquid temperature between 0°C and 40°C.
- Applicable in water supply and drainage for factories, mines, municipal facilities as well as field irrigation, etc.

Features

- Strengthened pump body ensures more durable and reliable service.
- The temperature of engine oil is always in best condition due to 2-in-1 integrated construction.
- Better sealing effect by using special mechanical seal.
- 5-direction outlet for convenient use.
- Improved starter handle for easier starting.
- 20% increased loading quantity thanks to very compact design.
- Less gasoline consumption.

Pump

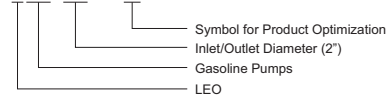
- Anti-rust cast iron impeller and diffuser
- High quality forged steel crankshaft
- Max. suction: 8 m
- Inlet/outlet: 50 mm/80 mm

Engine

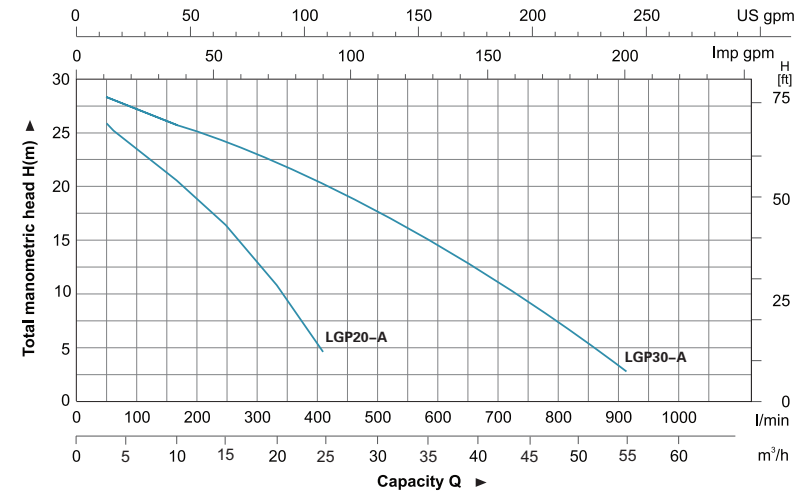
- Single cylinder, 4-stroke, Air-cooled
- Max. power: 5.5 HP/6.5 HP
- Displacement: 163 cc/196 cc
- Rated speed: 3600 rpm

Identification Codes

LGP 20 - A

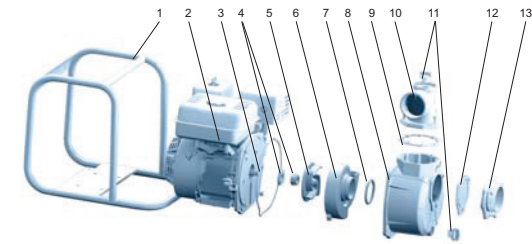


Hydraulic Performance Curve



Materials Table

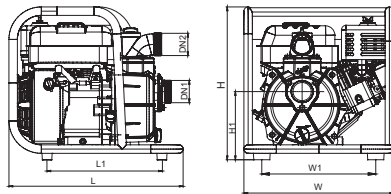
No.	Part	Material
1	Frame	Steel
2	Gasoline engine	7
3	O-ring	NBR
4	Mechanical seal	Ceramic/carbon
5	Impeller	Cast iron
6	Diffuser	Cast iron
7	O-ring	NBR
8	Pump body	Aluminum
9	Gasket	NBR
10	Outlet	Aluminum
11	Filling plug	PA6
12	Non-return valve	NBR
13	Inlet	Aluminum



Technical Data

MODEL	POWER HP	Q (m³/h)	Q (l/min)												
			0	5	10	15	20	25	30	35	40	45	50	55	60
LGP20-A	5.5	H (m)	28.6	25.1	21.6	17.6	13.4	5.9	-	-	-	-	-	-	-
LGP30-A	6.5		29.5	28.4	26.4	24.5	22.4	20.4	17.7	15.4	12.4	8.9	5.5	2.6	-

Dimension



Model	DN1	DN2	L (mm)	W (mm)	H (mm)	L1 (mm)	W1 (mm)	H1 (mm)
LGP20-A	2"	2"	462	397.5	405.5	306.5	302.5	181
LGP30-A	3"	3"	462	397.5	405.5	306.5	302.5	189

Package Information

Model	GW (Kgs)	L (mm)	W (mm)	H (mm)	Quantity (PCS/20'TEU)
LGP20-A	21.5	450	395	410	350
LGP30-A	23	450	395	410	350