

Applications

- Air-conditioning system
- Cooling system
- Washing and cleaning system
- Water treatment
- Aquaculture
- Fertilizing/metering system
- Environmental application

Operation conditions

- Liquid temperature:
normal temperature type: -15°C~+70°C
hot water type: -15°C~+105°C
- Ambient temperature: maximum +40°C
- Operation pressure: maximum 10 bar

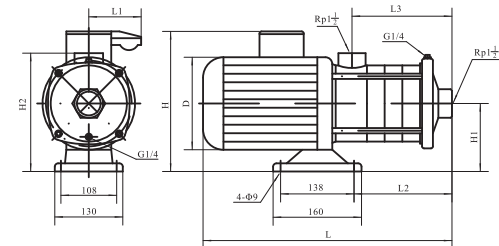
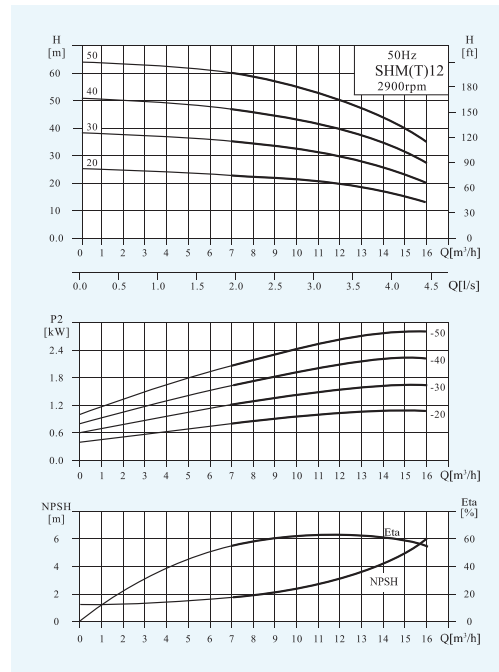
Motor

- Fitted with a totally enclosed, fan-cooled, 2-pole motor
- Enclosure class: IP55
- Insulation class: F
- Supply voltage: 50Hz or 60Hz

Material

- Inlet&outlet chamber: Stainless steel(304/316)
- Impeller: Stainless steel(304/316)
- Shell: Stainless steel(304/316)
- Shaft: Stainless steel(304/316)
- Mechanical seal: Graphite/SIC

Performance Curves



Performance Table

Model	Associated motor		Q (m³/h)	7	9	11	12	13	15	16
	(kW)	(hp)								
SHM(T)12-20	1.2	1.6	H (m)	23	22	20.5	19.5	18.5	15.5	13
SHM(T)12-30	1.8	2.4		35	33.5	31	29.5	28	23.5	20
SHM(T)12-40	2.4	3.3		47	45	41.5	39.5	37.5	31.5	27.5
SHM(T)12-50	3	4		60	56.5	52.5	50	47	40	35

Dimension&Weight

Motor	Model	Specification (mm)								Net Weight (kg)
		L	L1	L2	L3	H	H1	H2	D	
Three phase /Single phase	SHM(T)12-20	395	/100	126	108	230/265	118	228	170	21
	SHM(T)12-30	460	/100	156	138	240/270	118	228	180	25
	SHM(T)12-40	490	/100	186	168	240/270	118	228	180	29
	SHM(T)12-50	555		216	198	270/	126	240	195	34