

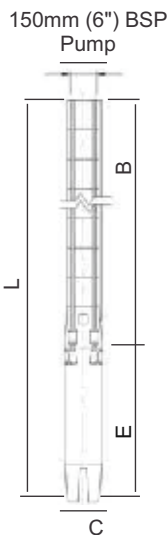


TYPICAL PERFORMANCE CURVE

TESTED ACCORDING TO ISO 9906 Annex A

PERFORMANCE 50Hz

# SS10215

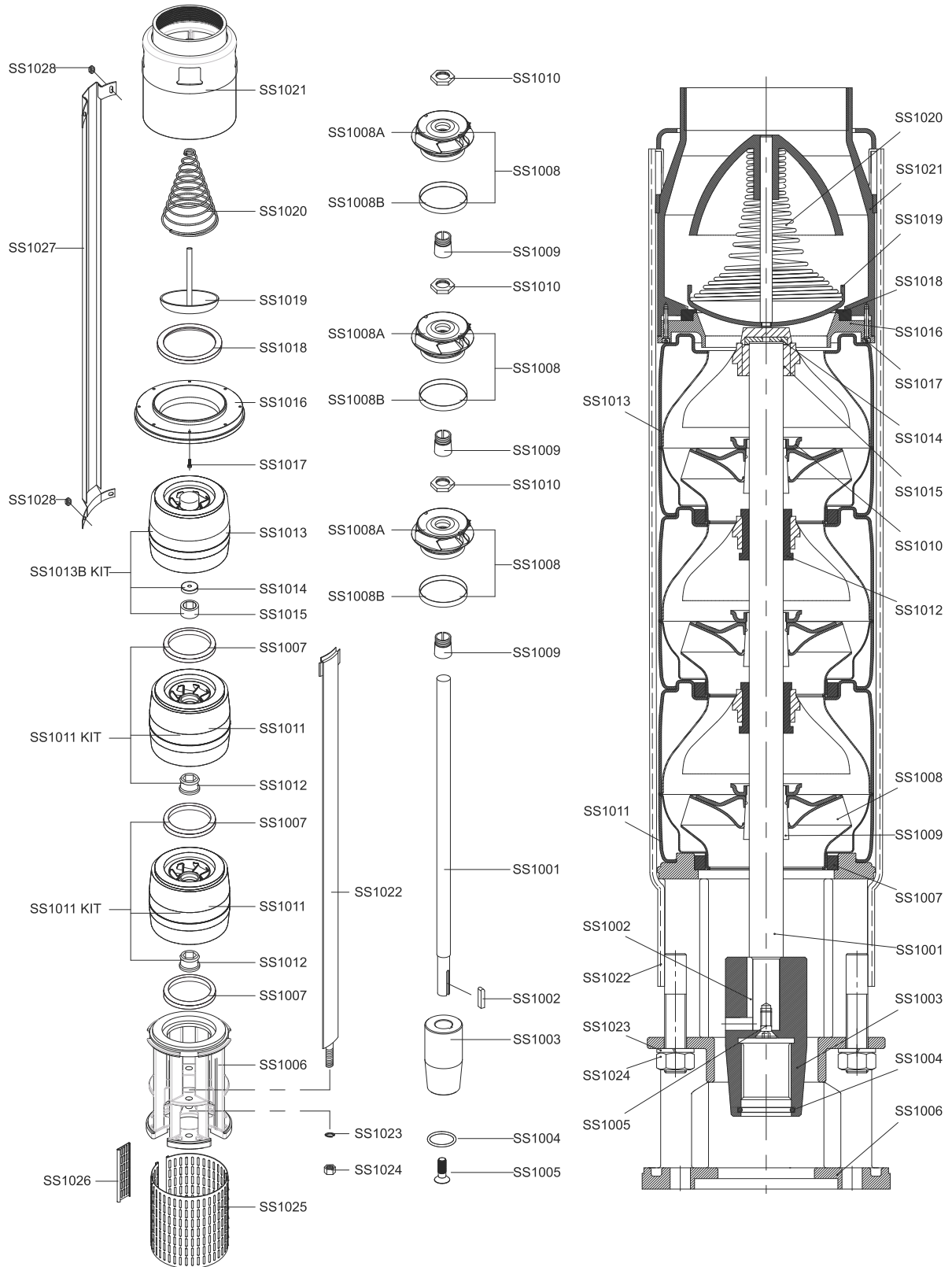


PUMP TYPE	MOTOR kW	DIMENSIONS (mm)										WEIGHT (kg)				
		250mm-200mm (10"-8")		200mm (8")	250mm (10")	250mm (10")	200mm (8")	250mm (10")	∅ PUMP	∅ D	MOTOR		PUMP		TOTAL	
		L	L	E	E	B	∅ = C	∅ = C			200mm (8")	250mm (10")	250mm-200mm (10"-8")	250mm-200mm (10"-8")	250mm-200mm (10"-10")	
SS 10215/1A	22	1706	-	930	-	776	195	-	232	6"	121	-	51,6	172,6	-	
SS 10215/01	22	1706	-	930	-	776	195	-	232	6"	121	-	51,6	172,6	-	
SS 10215/2AA	30	1992	-	1040	-	952	195	-	232	6"	140	-	60,7	200,7	-	
SS 10215/02	37	2022	-	1070	-	952	195	-	232	6"	146	-	60,7	206,7	-	
SS 10215/3AAA	45	2258	-	1130	-	1128	195	-	232	6"	158	-	69,8	227,8	-	
SS 10215/03A	55	2338	-	1210	-	1128	195	-	232	6"	177	-	69,8	247	-	
SS 10215/03	55	2378	-	1250	-	1128	195	-	232	6"	184	-	69,8	254	-	
SS 10215/04AAAA	67	2584	-	1280	-	1304	195	-	232	6"	190	-	78,9	269	-	
SS 10215/04AA	67	2669	-	1365	-	1304	195	-	232	6"	204	-	78,9	283	-	
SS 10215/04	75	2734	-	1430	-	1304	195	-	232	6"	218	-	78,9	297	-	
SS 10215/05AAA	90	2980	-	1500	-	1480	195	-	232	6"	230	-	88	318	-	
SS 10215/05	90	3100	2824	1620	1344	1480	195	240	232	6"	252	300	88	340	388	
SS 10215/06	110	3461	3120	1805	1464	1656	195	240	232	6"	292	330	97,1	389	427	
SS 10215/07	132	-	3416	-	1584	1832	-	240	232	6"	-	370	106,2	-	476	
SS 10215/08	150	-	3682	-	1674	2008	-	240	232	6"	-	400	115,3	-	515	
SS 10215/10	185	-	4058	-	1874	2184	-	240	232	6"	-	464	124,4	-	588	

PUMP TYPE	MOTOR	m³/h	0	150	170	190	200	205	210	215	220	225	230	250	270	
	kW	l / sec	0,00	41,67	47,22	52,78	55,56	56,94	58,33	59,72	61,11	62,50	63,89	69,44	75,00	
SS 10215/1A	22	Total Dynamic Head (TDH)	36	26	24	22	21	20	20	19	19	18	17	14	10	
SS 10215/01	22		42	31	29	27	27	26	26	25	24	24	24	23	20	16
SS 10215/2AA	30		71	51	48	45	42	41	40	39	38	36	36	35	27	20
SS 10215/02	37		84	61	57	55	53	52	51	50	49	48	46	46	40	33
SS 10215/3AAA	45		107	77	72	67	63	61	60	58	56	55	52	52	41	30
SS 10215/03A	55		119	87	81	77	74	73	71	69	68	66	63	63	54	43
SS 10215/03	55		126	92	86	82	80	78	77	75	73	72	69	69	60	49
SS 10215/04AAAA	67		142	103	96	89	85	82	79	78	75	73	69	69	55	40
SS 10215/04AA	67		155	113	105	99	95	93	91	89	87	84	81	81	68	53
SS 10215/04	75		168	122	115	109	106	105	103	100	98	96	92	92	80	66
SS 10215/05AAA	90		190	138	129	122	116	114	111	108	105	103	98	98	81	63
SS 10215/05	90		209	153	143	137	133	131	128	125	122	120	116	116	100	82
SS 10215/06	110		251	184	172	164	159	157	154	150	147	144	139	139	121	99
SS 10215/07	132		293	214	200	191	186	183	179	175	171	168	162	162	141	115
SS 10215/08	150		335	246	229	219	212	209	205	200	196	192	185	185	161	131
SS 10215/10	185		419	306	286	273	265	261	256	250	245	240	231	231	201	164

DATE: 17/02/2016

CURVE NO. SST018



DATE: 17/02/2016

CURVE NO. SSE008

Part No	Description	Material
SS1001	Shaft	Stainless steel / (AISI 420)
SS1002	Key	Stainless steel / (AISI 304)
SS1003	Coupling	Stainless steel / (AISI 420)
SS1004	O-Ring	Rubber
SS1005	Coupling Screw	Stainless steel / (AISI 304)
SS1006	Support	Stainless steel / (AISI 304)
SS1007	Neck Ring	Rubber / Noryl
SS1008A	Impeller	Stainless steel / (AISI 304)
SS1008B	Ring Of Impeller	Stainless steel / (AISI 304)
SS1009	Split Cone	Stainless steel / (AISI 420)
SS1010	Split Cone Nut	Stainless steel / (AISI 304)
SS1011	Diffuser	Stainless steel / (AISI 304)
	Diffuser	Stainless steel / (AISI 304)
SS1011 KIT	Neck Ring	Rubber / Noryl
	Bearing	Rubber
SS1012	Bearing	Rubber
SS1013	Diffuser With Stopper	Stainless steel / (AISI 304)
	Diffuser With Stopper	Stainless steel / (AISI 304)
SS1013B KIT	Bearing	Rubber / Steel
	Spacing Washer For Stop Ring	Composite
SS1014	Spacing Washer For Stop Ring	Composite
SS1015	Bearing	Rubber / Steel
SS1016	Valve Ring	Stainless steel / (AISI 304)
SS1017	Valve Ring Screw	Stainless steel / (AISI 304)
SS1018	Valve Seat	Rubber
SS1019	Valve Cone	Stainless steel / (AISI 304)
SS1020	Valve Spring	Stainless steel / (AISI 304)
SS1021	Discharge ( 6" Normal )	Stainless steel / (AISI 304)
SS1021-A	Discharge ( NPT - Rp 6)	Stainless steel / (AISI 304)
SS1022	Strap	Stainless steel / (AISI 304)
SS1023	Strap spring washer	Stainless steel / (AISI 304)
SS1024	Strap Nut	Stainless steel / (AISI 304)
SS1025	Strainer	Stainless steel / (AISI 304)
SS1026	Strainer lock	Stainless steel / (AISI 304)
SS1027	Cable Guard	Stainless steel / (AISI 304)
SS1028	Cable Guard Nut	Stainless steel / (AISI 304)