

Submersible Pumps

6" Stainless Steel

13 m³/h Specifications

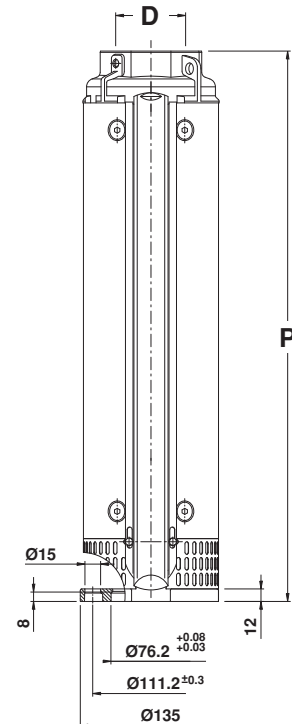
Dimension Information

| kW | Stages | D* | Motor Size | *P(mm) | Weight(kg) |
|------|--------|------|------------|--------|------------|
| 2.2 | 5 | 2.5" | 6" | 356 | 10.5 |
| 3.7 | 8 | 2.5" | 6" | 446 | 13 |
| 5.5 | 13 | 2.5" | 6" | 596 | 16.5 |
| 7.5 | 17 | 2.5" | 6" | 716 | 19.5 |
| 9.3 | 22 | 2.5" | 6" | 866 | 23 |
| 11 | 26 | 2.5" | 6" | 986 | 26 |
| 15 | 32 | 2.5" | 6" | 1166 | 30.5 |
| 15 | 36 | 2.5" | 6" | 1286 | 33.5 |
| 18.5 | 42 | 2.5" | 6" | 1466 | 38 |

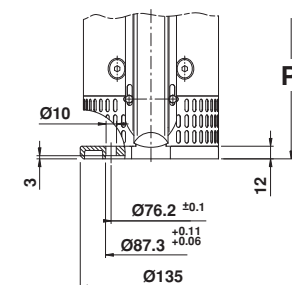
* Note: D = Discharge, P = Pump Length

| Parts Description | Material | |
|--|------------------------------------|---------|
| | Type | AISI |
| Outer case with motor adapter | Stainless Steel | 304 |
| Discharge head with built-in check valve | Stainless Steel | 304 |
| Sealing O-ring | Nitrile Rubber (NBR) | N/A |
| Upper bowl | Stainless Steel | 304 |
| Upper bearing bushing | Nitrile Rubber (NBR) | N/A |
| Upper journal sleeve | Stainless Steel w/ ceramic coating | 329 |
| Pump shaft | Stainless Steel | 431 |
| Motor coupling | Stainless Steel | 431/329 |
| Diffuser | Stainless Steel | 304 |
| Floating neck ring | Teflon (PTFE) | N/A |
| Secondary bearing bushing | Nitrile Rubber (NBR) | N/A |
| Secondary journal sleeve | Stainless Steel | 304 |
| Impeller | Stainless Steel | 304 |
| Cable guard | Stainless Steel | 316 |
| Suction strainer | Stainless Steel | 316 |
| Insert locking outer case | Stainless Steel | 316 |
| Up-thrust washer | Stainless Steel | 316 |
| Up-thrust disc | Teflon (PTFE) | N/A |
| Screws and washers | Stainless Steel | 316 |

Dimensions

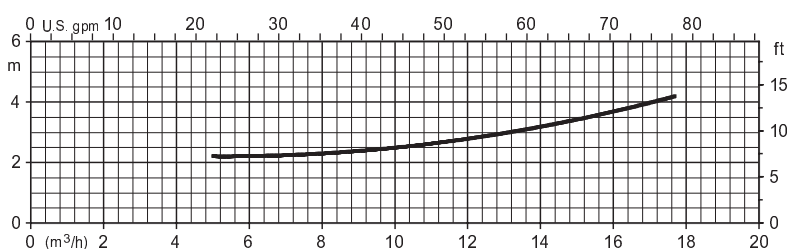


6" Motor Adapter



4" Motor Adapter

NPSH at ~ 2850 rpm



Capacity

| | Diameter with 1 cable cover | Diameter with 2 cable cover | External Motor Diameter |
|-----------------------|-----------------------------|-----------------------------|-------------------------|
| Pump 6" | 141 | 145 | / |
| Pump 6" with motor 4" | 141 | / | 95.25 |
| Pump 6" with motor 6" | 144 | 146.5 | 136.5 |

*Note: All units are in millimeters