



Application

- Civil engineering
- Mines, quarries, Coal ore & slurries
- Sewage treatment plants
- General pumping purposes
- Pumping fluid: sludge, liquids containing mud and bentonite

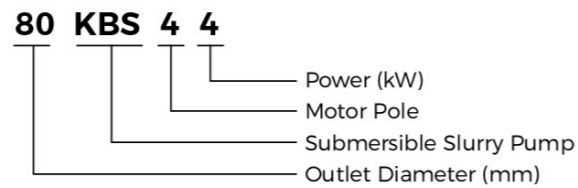
Pump

- Max. liquid temperature: +40°C
- Flow: up to 60 m³/h
- Head: up to 57 m
- Power: 1.5 kW (2 HP) to 15 kW (20 HP)
- Max. Immersion depth: 25 m
- Cable Length: 8 m

Motor

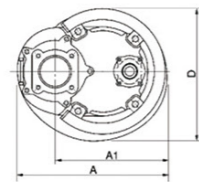
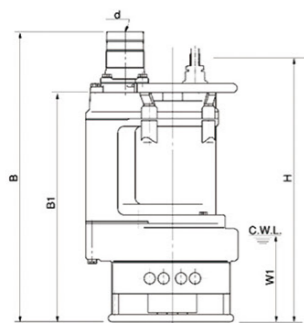
- Copper winding
- Insulation class: B
- Enclosures class: IP68

Identification Codes



Technical Data

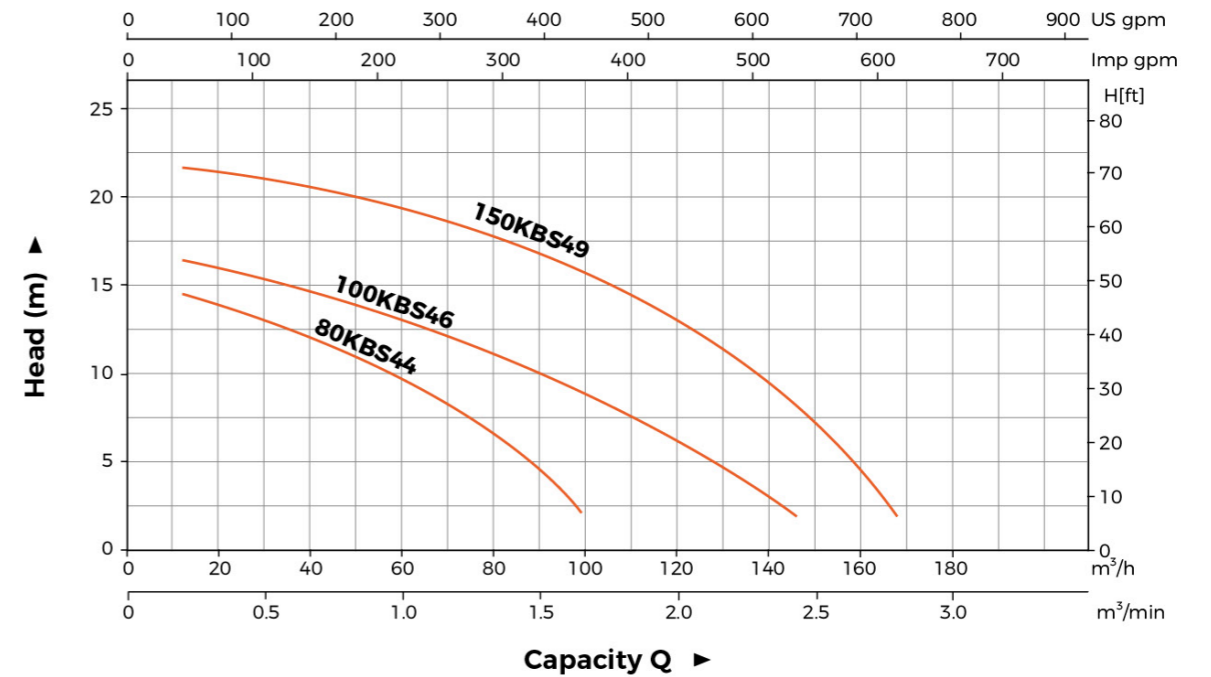
Model	Power		Discharge mm	Max. flow		Max. head m	Max. Solid Dia mm
	kW	HP		m ³ /h	l/min		
80KBS44	4	5.5	80	99	1650	14.8	30
100KBS46	6	8	100	144	2400	16.9	30
150KBS49	9	12	150	192	3200	21.5	30



Dimension

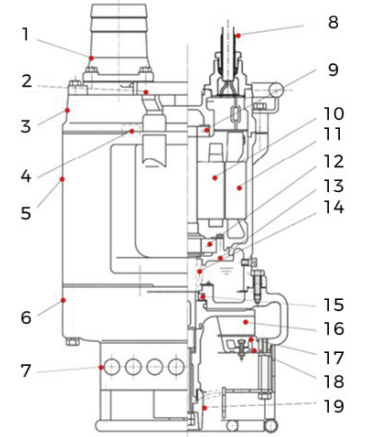
Model	d (mm)	A (mm)	A1 (mm)	B (mm)	B1 (mm)	D (mm)	H (mm)	W1 (mm)
80KBS44	80	350	260	816	666	326	730	250
100KBS46	100	415	305	844	688	373	730	250
150KBS49	150	434	324	889	709	407	776	250

Hydraulic Performance Curves



Material Table

No.	Part	Material	No.	Part	Material
1	Hose coupling	Cast iron	11	Stator	
2	Handle	Steel	12	Bearing	
3	Upper cover	Cast iron	13	Bearing house	Cast iron
4	Motor protector		14	Mechanical seal	Sic-Sic/Sic-Sic
5	Motor body	Cast iron	15	Oil seal	
6	Pump body	Cast iron	16	Impeller	High chrome alloy
7	Strainer	Steel	17	Inlet plate	High chrome alloy
8	Cable		18	Inlet base	Cast iron
9	Bearing		19	Agitator	High chrome alloy
10	Rotor				



Package Information

Model	N.W (kg)	CW (kg)	L (mm)	W (mm)	H (mm)	Quantity (PCS/20' TEU)
80KBS44	105	113	855	415	400	190
100KBS46	145	156	415	475	990	143
150KBS49	170	184	475	475	1050	118