

## Applications

- Water supply
- Industry pressure boosting
- Industry liquid transfer
- Water treatment
- Irrigation

## Motor

- Fitted with a totally enclosed fan-cooled, 2-pole motor
- Enclosure class: IP55
- Insulation class: F
- Supply voltage: 50Hz or 60Hz

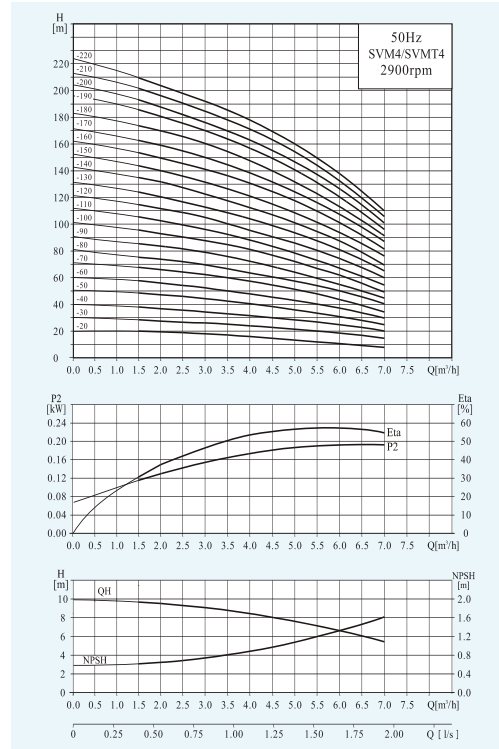
## Operation conditions

- Thin, clean, non-explosive liquids, not containing solid particles or fibers liquid
- Liquid temperature: normal temperature type: -15°C~+70°C hot water type: -15°C~+105°C
- Ambient temperature: maximum +40°C
- Altitude: maximum 1000m

## Material

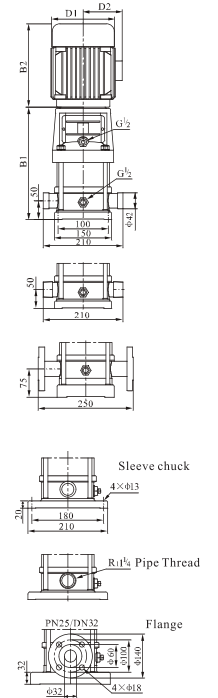
- Inlet&outlet chamber: Cast iron/Stainless steel(304/316)
- Impeller: Stainless steel(304/316)
- Shell: Stainless steel(304/316)
- Shaft: Stainless steel(304/316)
- Coupling: Ductile iron
- Bearing: Tungsten carbide
- Mechanical seal: Tungsten carbide/Graphite

## Performance Curves



## Performance Table

Model	Associated motor(kw)	Q (m³/h)	H (m)						
			1.5	2.0	3.0	4.0	5.0	6.0	7.0
SVM4-20	0.37		19	18	17	15	13	10	8
SVM4-30	0.55		28	27	26	24	20	18	13
SVM4-40	0.75		38	36	34	32	27	24	19
SVM4-50	1.1		47	45	43	40	34	31	23
SVM4-60	1.1		56	54	52	48	41	37	28
SVM4-70	1.5		66	63	61	56	48	43	33
SVM4-80	1.5		74	72	70	64	55	50	38
SVM4-100	2.2		96	90	87	81	71	62	48
SVM4-120	2.2		114	108	104	95	85	75	58
SVM4-140	3.0		136	126	122	112	101	89	68
SVM4-160	3.0		152	144	140	129	115	101	78
SVM4-190	4.0		183	171	168	153	137	122	93
SVM4-220	4.0		211	200	192	178	160	138	108



## Dimension & Weight

Model	Size (mm)					Net Weight(kg)
	B1	B2	B1+B2	D1	D2	
SVM4-20	276	225	501	148	117	21
SVM4-30	303	225	528	148	117	22
SVM4-40	340	245	585	170	142	25
SVM4-50	367	245	612	170	142	27
SVM4-60	394	245	639	170	142	27
SVM4-70	431	290	721	190	155	33
SVM4-80	458	290	748	190	155	33
SVM4-100	512	290	802	190	155	37
SVM4-120	566	290	856	190	155	38
SVM4-140	630	345	975	197	165	46
SVM4-160	684	345	1029	197	165	48
SVM4-190	765	355	1120	230	188	57
SVM4-220	846	355	1201	230	188	59