

8" SUBMERSIBLE MOTOR

WATER FILLED



Technical specification

8" Water lubricated submersible motor

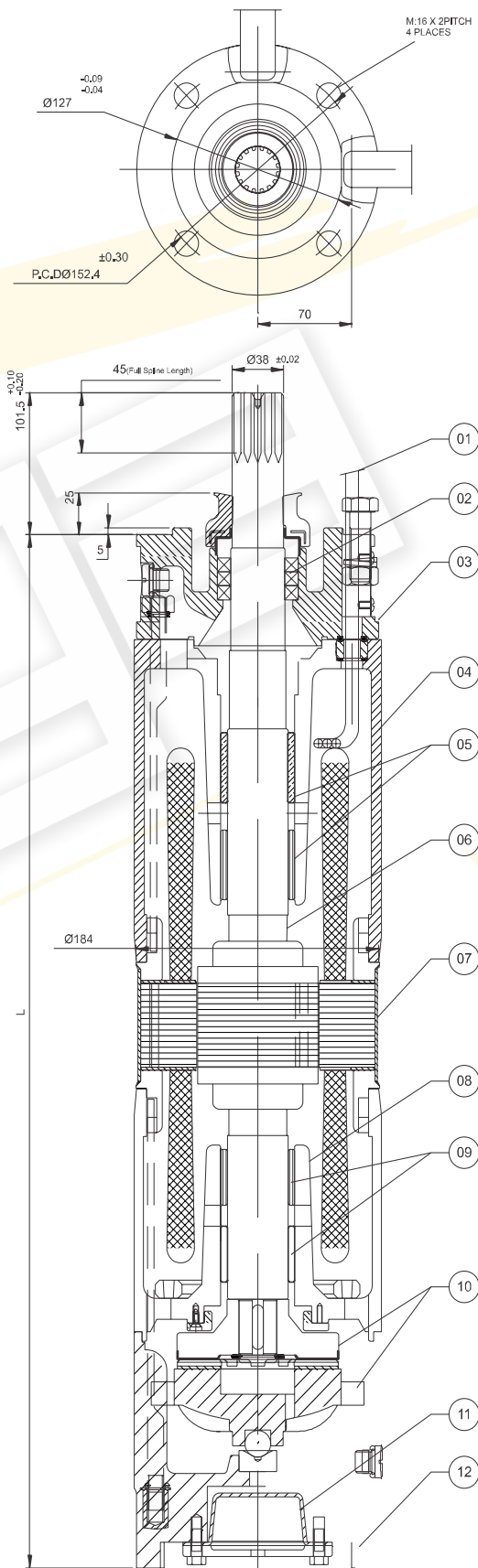
Coupling dimensions as per NEMA standard.

Voltage:	380-415V & 525V 50Hz
Winding wire:	Polywrapped
Protection:	IP68
Max water temperature:	35 °C
Max starts per hour:	20
Allowable voltage variation:	+6% - 10%
Motor shaft:	Stainless steel
Stator shell:	Stainless steel
Max immersion:	350m
Mounting:	vertical / up to 15 ° above horizontal
Cable:	3m X 4 core

Material specification

NO	PART NAME	MATERIAL
01	Cable 4 core	EPR
02	Oil seal	N.B.R
03	Adapter	CAST IRON(FG-200)
04	Upper housing	CAST IRON(FG-200)
05	Bearing bush	LTB-4 (2% Ni) / M.S-N.B.R
06	Robot shaft	S.S.431
07	Motor shell	S.S.304
08	Lower housing	CAST IRON (FG-200)
09	Bearing bush	LTB-4 (2% Ni) / M.S-N.B.R
10	Thrust bearing set	CARBON / S.S.420
11	Pressure cup	H.B.R
12	Motor base	CAST IRON (FG-200)
13	All hardware	S.S.304

Pn		Weight	
kW	HP	Nett (kg)	Gross (kg)
45	60	165	183.4
55	75	205	223
75	100	220	245



Technical data

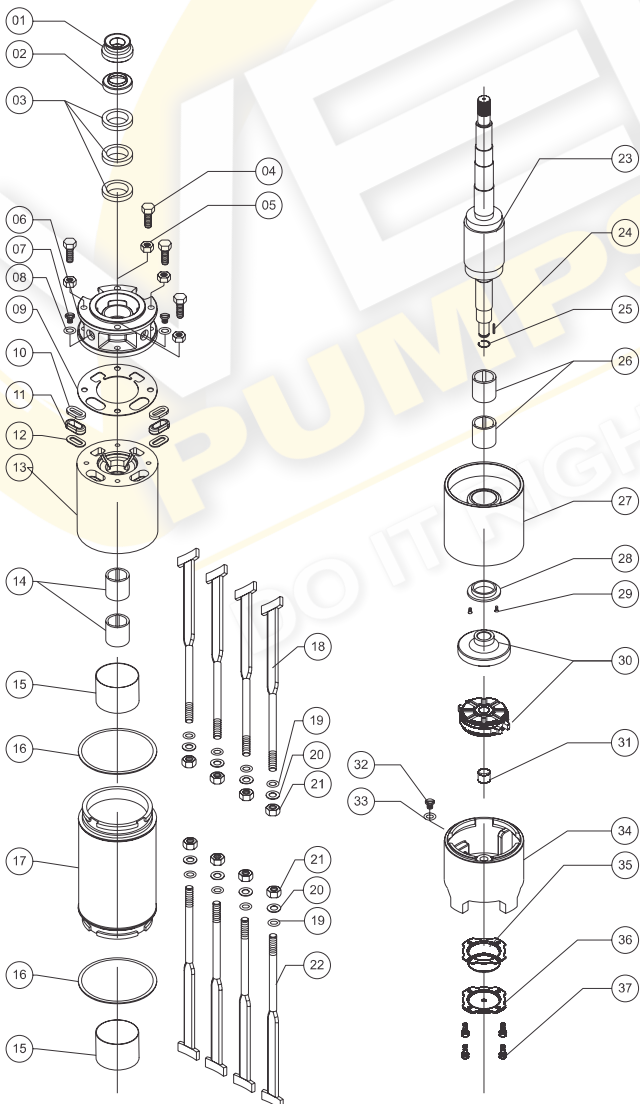
380V

TYPE	HP	kW	AMPS			Hz	RPM			COS O			CONN.	THRUST LOAD	WIND	COOLING FLOW m/sec	MAX WATER TEMP.	CABLE
			380 V	400 V	415 V		380 V	400 V	415 V	380 V	400 V	415 V						
V8	60	45	92.9	90	88	50	2895	2910	2910	0.88	0.86	0.85	Delta (I)	45000	PW	0.5	35	SINGLE
V8	75	55	115	110	109	50	2910	2915	2920	0.88	0.85	0.85	Delta (I)	45000	PW	0.5	35	SINGLE
V8	100	75	152	147	145	50	2890	2910	2910	0.88	0.85	0.85	Delta (I)	45000	PW	0.5	35	SINGLE

525V

TYPE	HP	kW	AMPS			Hz	RPM			COS O			CONN.	THRUST LOAD	WIND	COOLING FLOW m/sec	MAX WATER TEMP.	CABLE
			480 V	500 V	525 V		480V	500V	525V	480V	500V	525V						
V8	60	45	74	67	67	50	2880	2890	2900	0.81	0.82	0.84	Delta (I)	45000	PW	0.5	35	SINGLE
V8	75	55	75	68	68	50	2881	2892	2900	0.81	0.8	0.83	Delta (I)	45000	PW	0.5	35	SINGLE
V8	100	75	76	70	70	50	2882	2890	2900	0.81	0.8	0.84	Delta (I)	45000	PW	0.5	35	SINGLE

Exploded drawing



1	Sand Guard
2	Upper Cap
3	Oil Seal
4	Hex Bolt
5	Hex Nut
6	Adapter
7	Drain Plug
8	Drain Plug O-ring
9	Paper Gasket
10	Grommet Washer
11	Grommet
12	Grommet Washer
13	Upper Housing
14	Bearing Bush
15	Winding Cap
16	Paper Gasket
17	Stator Body
18	T-bolt Washer

19	T-bolt O-ring
20	T-bolt Washer
21	Hex Nut
22	T-bolt
23	Rotor
24	Rotor Key
25	Rotor Cir Clip
26	Bearing Bush
27	Lower Housing
28	Fiber C.T Bearing
29	Screw
30	Counter Bearing Set
31	Fix Rocker
32	Drain Plug
33	Motor Base
34	Pressure Cupe
35	Drain Plug
36	Motor Baseplate