

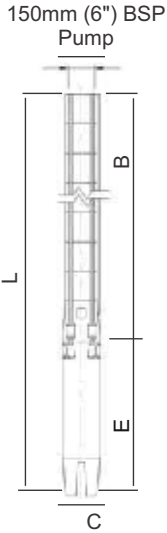


TYPICAL PERFORMANCE CURVE

TESTED ACCORDING TO ISO 9906 Annex A

PERFORMANCE 50Hz

SS10108



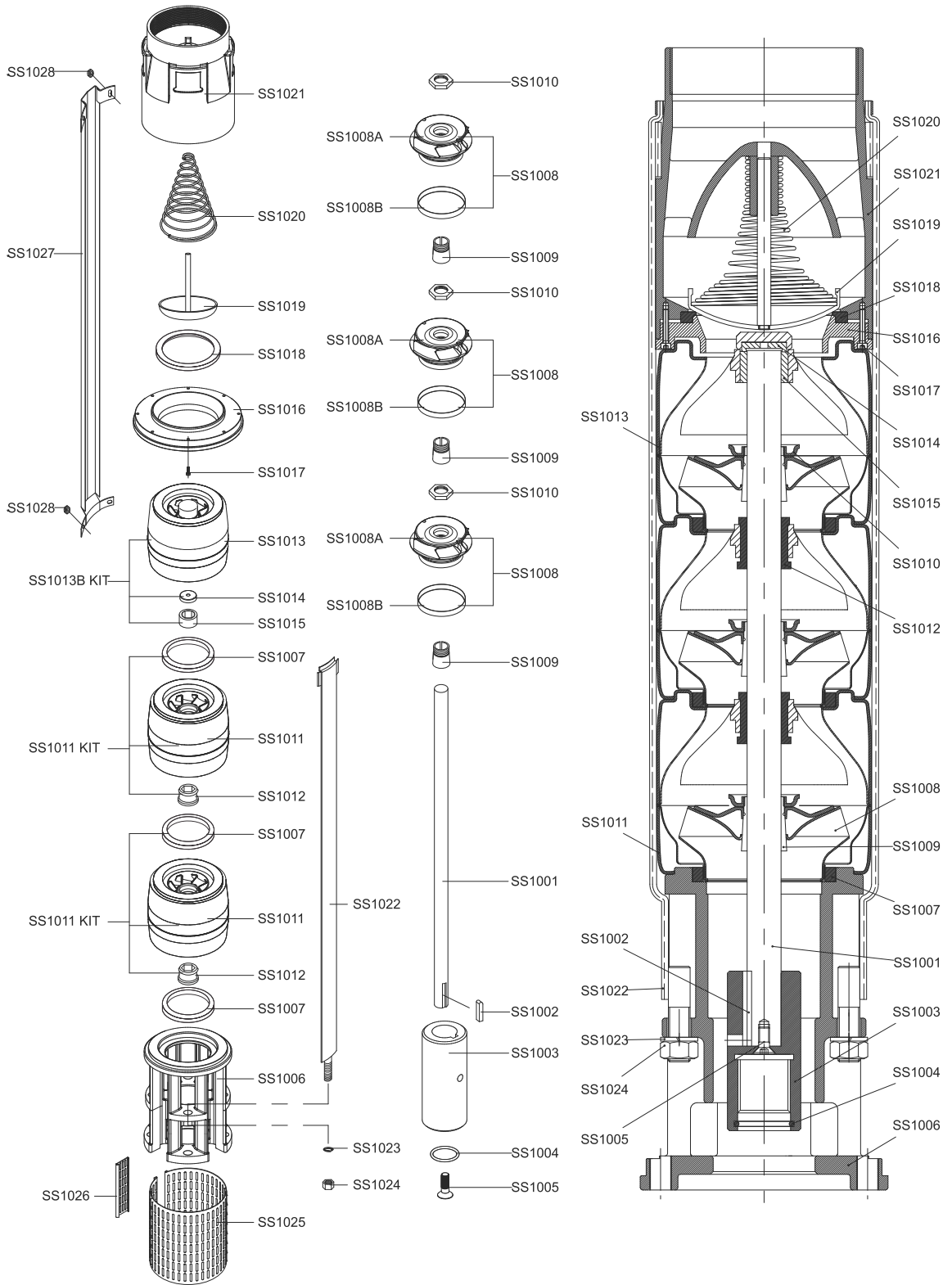
PUMP TYPE	MOTOR kW	DIMENSIONS (mm)															WEIGHT (kg)											
		250mm-150mm (10"-6")			250mm-200mm (10"-8")			250mm-250mm (10"-10")			150mm (6")			200mm (8")			250mm (10")			MOTOR			PUMP			TOTAL		
		L	L	L	E	E	E	B	B	B	ø = C	ø = C	ø = C	ø PUMP	ø D	150mm (6")	200mm (8")	250mm (10")	250mm-150mm (10"-6")	250mm-200mm (10"-8")	250mm-250mm (10"-10")	250mm-150mm (10"-6")	250mm-200mm (10"-8")	250mm-250mm (10"-10")	250mm-150mm (10"-6")	250mm-200mm (10"-8")	250mm-250mm (10"-10")	
SS 10108/01	7,5	1258	-	-	650	-	-	608	-	-	145	-	-	208	6"	48	-	-	30	-	-	78	-	-				
SS 10108/02	15	1594	-	-	830	-	-	764	-	-	145	-	-	208	6"	66	-	-	36	-	-	102	-	-				
SS 10108/03	22	1900	1850	-	980	930	-	920	920	-	145	195	-	208	6"	82	121	-	42	43	-	124	164	-				
SS 10108/04	30	2186	2116	-	1110	1040	-	1076	1076	-	145	195	-	208	6"	98	140	-	48	50	-	146	190	-				
SS 10108/05	37	2422	2302	-	1190	1070	-	1232	1232	-	145	195	-	208	6"	106	146	-	55	55	-	161	201	-				
SS 10108/06	45	2658	2518	-	1270	1130	-	1388	1388	-	145	195	-	208	6"	116	158	-	61	62	-	177	220	-				
SS 10108/07	55	-	2754	-	-	1210	-	-	1544	-	-	195	-	208	6"	-	177	-	-	68	-	-	245	-				
SS 10108/08	67	-	2980	-	-	1280	-	-	1700	-	-	195	-	208	6"	-	190	-	-	74	-	-	264	-				
SS 10108/09	67	-	3221	-	-	1365	-	-	1856	-	-	195	-	208	6"	-	204	-	-	80	-	-	284	-				
SS 10108/10	75	-	3442	-	-	1430	-	-	2012	-	-	195	-	208	6"	-	218	-	-	86	-	-	304	-				
SS 10108/11	90	-	3668	-	-	1500	-	-	2168	-	-	195	-	208	6"	-	230	-	-	92	-	-	322	-				
SS 10108/12	90	-	3944	3668	-	1620	1344	-	2324	2324	-	195	232	208	6"	-	252	300	-	98	98	-	350	398				
SS 10108/13	110	-	4285	3944	-	1805	1464	-	2480	2480	-	195	232	208	6"	-	292	330	-	104	104	-	396	434				
SS 10108/14	110	-	4441	4100	-	1805	1464	-	2636	2636	-	195	232	208	6"	-	292	330	-	110	110	-	402	440				
SS 10108/15	110	-	4597	4258	-	1805	1464	-	2792	2792	-	195	232	208	6"	-	292	330	-	116	116	-	408	446				

PUMP TYPE	MOTOR	m ³ /h	0	78	84	90	100	108	115	125	135	145
	kW	l / sec	0,00	21,7	23,3	25,0	27,8	30,0	31,9	34,7	37,5	40,3
SS 10108/01	7,5	Total Dynamic Head (TDH)	25	22	21	20	20	19	18	16	15	13
SS 10108/02	15		50	43	42	41	39	37	36	32	29	27
SS 10108/03	22		74	65	62	61	59	56	53	49	44	40
SS 10108/04	30		99	86	83	81	79	74	71	65	58	54
SS 10108/05	37		124	108	104	102	99	93	89	81	73	67
SS 10108/06	45		149	129	125	122	118	111	107	97	88	80
SS 10108/07	55		173	151	145	142	138	130	125	114	102	94
SS 10108/08	67		198	172	166	163	158	148	142	130	117	107
SS 10108/09	67		223	194	187	183	178	167	160	146	131	121
SS 10108/10	75		248	215	208	203	197	185	178	162	146	134
SS 10108/11	90		273	237	228	224	217	204	196	179	161	148
SS 10108/12	90		297	258	249	244	237	222	213	195	175	161
SS 10108/13	110		322	280	270	265	257	241	231	211	190	174
SS 10108/14	110		347	301	291	285	276	259	249	227	204	188
SS 10108/15	110		372	323	311	305	296	278	267	244	219	201

DATE: 17/02/2016

CURVE NO. SST015







TYPICAL PERFORMANCE CURVE

TESTED ACCORDING TO ISO 9906 Annex A

PERFORMANCE 50Hz

SS10108-SS10120-SS10160

Part No	Description	Material
SS1001	Shaft	Stainless steel / (AISI 420)
SS1002	Key	Stainless steel / (AISI 304)
SS1003	Coupling	Stainless steel / (AISI 420)
SS1004	O-Ring	Rubber
SS1005	Coupling Screw	Stainless steel / (AISI 304)
SS1006	Support	Stainless steel / (AISI 304)
SS1007	Neck Ring	Rubber / Noryl
SS1008A	Impeller	Stainless steel / (AISI 304)
SS1008B	Ring Of Impeller	Stainless steel / (AISI 304)
SS1009	Split Cone	Stainless steel / (AISI 420)
SS1010	Split Cone Nut	Stainless steel / (AISI 304)
SS1011	Diffuser	Stainless steel / (AISI 304)
	Diffuser	Stainless steel / (AISI 304)
SS1011 KIT	Neck Ring	Rubber / Noryl
	Bearing	Rubber
SS1012	Bearing	Rubber
SS1013	Diffuser With Stopper	Stainless steel / (AISI 304)
	Diffuser With Stopper	Stainless steel / (AISI 304)
SS1013B KIT	Bearing	Rubber / Steel
	Spacing Washer For Stop Ring	Composite
SS1014	Spacing Washer For Stop Ring	Composite
SS1015	Bearing	Rubber / Steel
SS1016	Valve Ring	Stainless steel / (AISI 304)
SS1017	Valve Ring Screw	Stainless steel / (AISI 304)
SS1018	Valve Seat	Rubber
SS1019	Valve Cone	Stainless steel / (AISI 304)
SS1020	Valve Spring	Stainless steel / (AISI 304)
SS1021	Discharge (6" Normal)	Stainless steel / (AISI 304)
SS1021-A	Discharge (NPT - Rp 6)	Stainless steel / (AISI 304)
SS1022	Strap	Stainless steel / (AISI 304)
SS1023	Strap spring washer	Stainless steel / (AISI 304)
SS1024	Strap Nut	Stainless steel / (AISI 304)
SS1025	Strainer	Stainless steel / (AISI 304)
SS1026	Strainer lock	Stainless steel / (AISI 304)
SS1027	Cable Guard	Stainless steel / (AISI 304)
SS1028	Cable Guard Nut	Stainless steel / (AISI 304)

DATE: 17/02/2016

CURVE NO. SSS007



Franklin Electric