

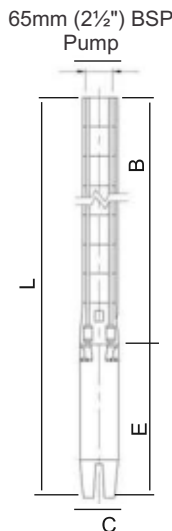


TYPICAL PERFORMANCE CURVE

TESTED ACCORDING TO ISO 9906 Annex A

PERFORMANCE 50Hz

SS612



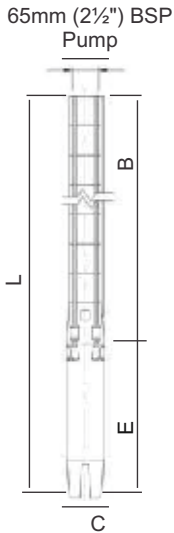
PUMP TYPE	MOTOR kW	DIMENSIONS ( mm )										WEIGHT ( kg )							
		150mm-100mm (6"-4")		150mm-150mm (6"-6")		100mm (4")		150mm (6")		150mm-100mm (6"-4")		100mm (4")		150mm (6")		PUMP		TOTAL	
		L	L	E	E	B	B	ø = C	ø = C	ø PUMP	ø D	100mm (4")	150mm (6")	150mm-100mm (6"-4")	150mm-150mm (6"-6")	150mm-100mm (6"-4")	150mm-150mm (6"-6")		
SS 612/05	3	1079	-	581	-	498	-	93	-	133	2 1/2"	19	-	12	-	31	-		
SS 612/06	3	1109	-	581	-	528	-	93	-	133	2 1/2"	19	-	12	-	31	-		
SS 612/07	4	1179	1188	621	630	558	558	93	145	133	2 1/2"	21	46	13	13	34	59		
SS 612/08	4	1210	1219	621	630	589	589	93	145	133	2 1/2"	21	46	14	14	35	60		
SS 612/09	4	1240	1249	621	630	619	619	93	145	133	2 1/2"	21	46	14	15	35	61		
SS 612/10	5,5	1389	1279	740	630	649	649	93	145	133	2 1/2"	25	46	15	16	40	62		
SS 612/11	5,5	1419	1309	740	630	679	679	93	145	133	2 1/2"	25	46	16	17	41	63		
SS 612/12	5,5	1449	1339	740	630	709	709	93	145	133	2 1/2"	25	46	17	17	42	63		
SS 612/13	5,5	1480	1370	740	630	740	740	93	145	133	2 1/2"	25	46	17	18	42	64		
SS 612/14	7,5	1630	1420	860	650	770	770	93	145	133	2 1/2"	31	48	18	19	49	67		
SS 612/15	7,5	1660	1450	860	650	800	800	93	145	133	2 1/2"	31	48	19	20	50	68		
SS 612/16	7,5	1690	1480	860	650	830	830	93	145	133	2 1/2"	31	48	20	21	51	69		
SS 612/17	7,5	1720	1510	860	650	860	860	93	145	133	2 1/2"	31	48	21	22	52	70		
SS 612/18	9,2	-	1581	-	690	-	891	-	145	133	2 1/2"	-	50	-	23	-	73		
SS 612/19	9,2	-	1611	-	690	-	921	-	145	133	2 1/2"	-	50	-	23	-	73		
SS 612/20	9,2	-	1641	-	690	-	951	-	145	133	2 1/2"	-	50	-	24	-	74		
SS 612/21	9,2	-	1671	-	690	-	981	-	145	133	2 1/2"	-	50	-	25	-	75		
SS 612/22	9,2	-	1701	-	690	-	1011	-	145	133	2 1/2"	-	50	-	26	-	76		
SS 612/23	11	-	1772	-	730	-	1042	-	145	133	2 1/2"	-	56	-	27	-	83		
SS 612/24	11	-	1802	-	730	-	1072	-	145	133	2 1/2"	-	56	-	28	-	84		

PUMP TYPE	MOTOR	m <sup>3</sup> /h	0	7	8	9	10	11	12	13	14	15	16	17	18
	kW	l / sec	0,00	1,94	2,22	2,50	2,78	3,06	3,33	3,61	3,89	4,17	4,44	4,72	5,00
SS 612/05	3	Total Dynamic Head (TDH)	55	49	48	47	45	42	39	36	32	28	24	19	15
SS 612/06	3		65	59	58	56	53	50	46	43	38	33	28	23	18
SS 612/07	4		76	69	67	65	62	59	54	50	45	39	33	27	21
SS 612/08	4		87	78	77	74	71	67	62	57	51	44	38	30	24
SS 612/09	4		98	88	86	84	80	76	69	64	58	50	42	34	27
SS 612/10	5,5		109	98	96	93	89	84	77	71	64	55	47	38	30
SS 612/11	5,5		120	108	106	102	98	92	85	78	70	61	52	42	33
SS 612/12	5,5		131	118	115	112	107	101	92	85	77	66	56	46	36
SS 612/13	5,5		142	127	125	121	116	109	100	92	83	72	61	49	39
SS 612/14	7,5		153	137	134	130	125	118	108	99	90	77	66	53	42
SS 612/15	7,5		164	147	144	140	134	126	116	107	96	83	71	57	45
SS 612/16	7,5		174	157	154	149	142	134	123	114	102	88	75	61	48
SS 612/17	7,5		185	167	163	158	151	143	131	121	109	94	80	65	51
SS 612/18	9,2		196	176	173	167	160	151	139	128	115	99	85	68	54
SS 612/19	9,2		207	186	182	177	169	160	146	135	122	105	89	72	57
SS 612/20	9,2		218	196	192	186	178	168	154	142	128	110	94	76	60
SS 612/21	9,2		229	206	202	195	187	176	162	149	134	116	99	80	63
SS 612/22	9,2		240	216	211	205	196	185	169	156	141	121	103	84	66
SS 612/23	11		251	225	221	214	205	193	177	163	147	127	108	87	69
SS 612/24	11		262	235	230	223	214	202	185	170	154	132	113	91	72

DATE: 17/02/2016

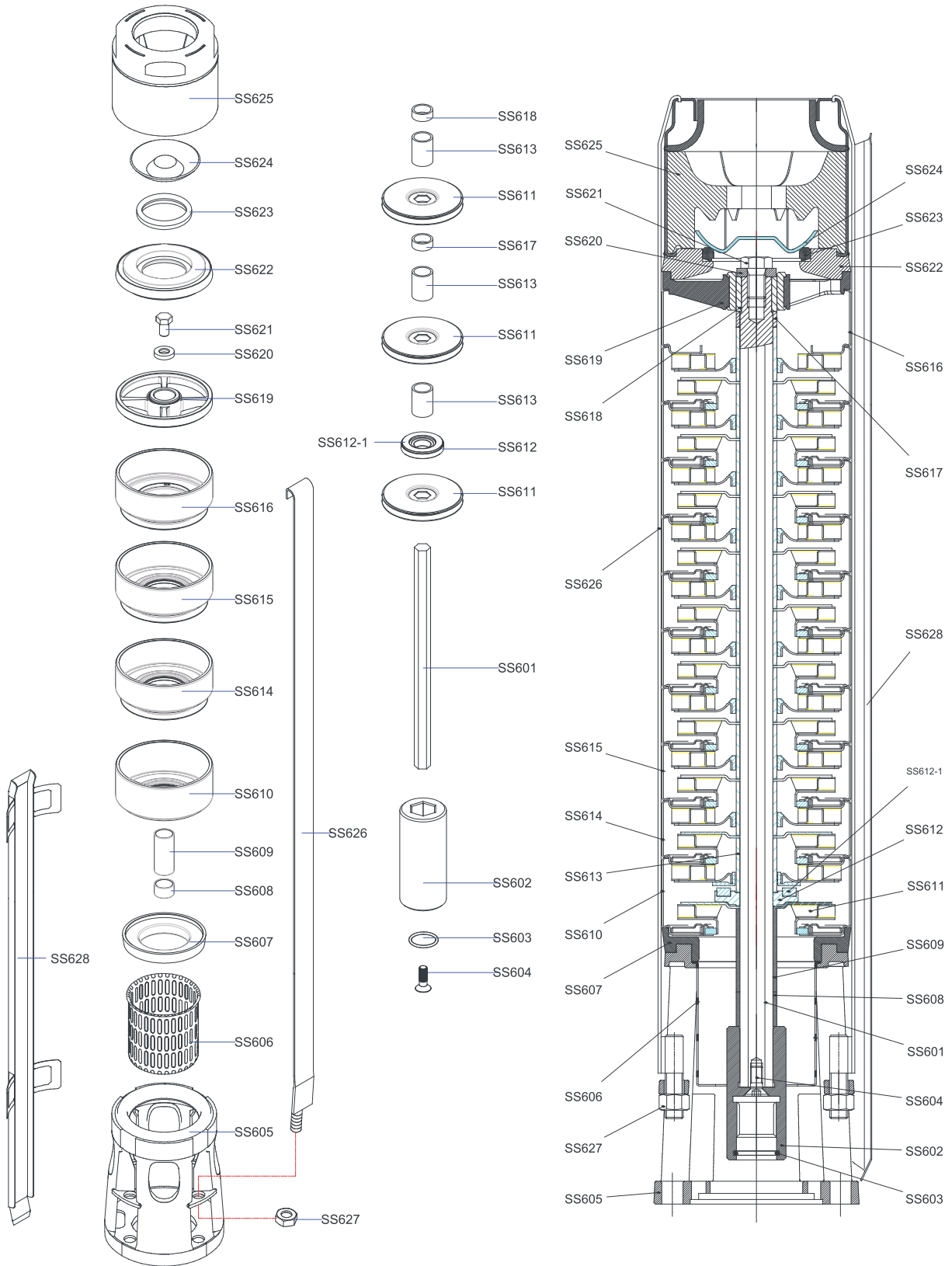
CURVE NO. SST001





PUMP TYPE	MOTOR	DIMENSIONS ( mm )										WEIGHT ( kg )					
		150mm-100mm (6"-4")	150mm-150mm (6"-6")	100mm (4")	150mm (6")	150mm-100mm (6"-4")	150mm-150mm (6"-6")	100mm (4")	150mm (6")	∅	∅	MOTOR		PUMP		TOTAL	
	L	L	E	E	B	B	∅ = C	∅ = C	PUMP	D	100mm (4")	150mm (6")	150mm-100mm (6"-4")	150mm-150mm (6"-6")	150mm-100mm (6"-4")	150mm-150mm (6"-6")	
SS 612/25	11	-	1832	-	730	-	1102	-	145	133	2 1/2"	-	56	-	29	-	85
SS 612/26	11	-	1862	-	730	-	1132	-	145	133	2 1/2"	-	56	-	29	-	85
SS 612/27	15	-	1942	-	780	-	1162	-	145	133	2 1/2"	-	60	-	30	-	90
SS 612/28	15	-	1973	-	780	-	1193	-	145	133	2 1/2"	-	60	-	31	-	91
SS 612/29	15	-	2003	-	780	-	1223	-	145	133	2 1/2"	-	60	-	32	-	92
SS 612/30	15	-	2033	-	780	-	1253	-	145	133	2 1/2"	-	60	-	33	-	93
SS 612/31	15	-	2113	-	830	-	1283	-	145	133	2 1/2"	-	66	-	34	-	100
SS 612/32	15	-	2143	-	830	-	1313	-	145	133	2 1/2"	-	66	-	35	-	101
SS 612/33	15	-	2174	-	830	-	1344	-	145	133	2 1/2"	-	66	-	35	-	101
SS 612/34	15	-	2204	-	830	-	1374	-	145	133	2 1/2"	-	66	-	36	-	102
SS 612/35	15	-	2234	-	830	-	1404	-	145	133	2 1/2"	-	66	-	37	-	103
SS 612/36	15	-	2264	-	830	-	1434	-	145	133	2 1/2"	-	66	-	38	-	104
SS 612/37	18,5	-	2344	-	880	-	1464	-	145	133	2 1/2"	-	72	-	39	-	111
SS 612/38	18,5	-	2375	-	880	-	1495	-	145	133	2 1/2"	-	72	-	40	-	112
SS 612/39	18,5	-	2405	-	880	-	1525	-	145	133	2 1/2"	-	72	-	41	-	113
SS 612/40	18,5	-	2435	-	880	-	1555	-	145	133	2 1/2"	-	72	-	41	-	113

PUMP TYPE	MOTOR	m³/h	0	7	8	9	10	11	12	13	14	15	16	17	18
	kW	l / sn	0,00	1,94	2,22	2,50	2,78	3,06	3,33	3,61	3,89	4,17	4,44	4,72	5,00
SS 612/25	11	Total Dynamic Head (TDH)	273	245	240	233	223	210	193	178	160	138	118	95	75
SS 612/26	11		283	255	250	242	231	218	200	185	166	143	122	99	78
SS 612/27	15		294	265	259	251	240	227	208	192	173	149	127	103	81
SS 612/28	15		305	274	269	260	249	235	216	199	179	154	132	106	84
SS 612/29	15		316	284	278	270	258	244	223	206	186	160	136	110	87
SS 612/30	15		327	294	288	279	267	252	231	213	192	165	141	114	90
SS 612/31	15		338	304	298	288	276	260	239	220	198	171	146	118	93
SS 612/32	15		349	314	307	298	285	269	246	227	205	176	150	122	96
SS 612/33	15		360	323	317	307	294	277	254	234	211	182	155	125	99
SS 612/34	15		371	333	326	316	303	286	262	241	218	187	160	129	102
SS 612/35	15		382	343	336	326	312	294	270	249	224	193	165	133	105
SS 612/36	15		392	353	346	335	320	302	277	256	230	198	169	137	108
SS 612/37	18,5		403	363	355	344	329	311	285	263	237	204	174	141	111
SS 612/38	18,5		414	372	365	353	338	319	293	270	243	209	179	144	114
SS 612/39	18,5		425	382	374	363	347	328	300	277	250	215	183	148	117
SS 612/40	18,5		436	392	384	372	356	336	308	284	256	220	188	152	120



DATE: 17/02/2016

CURVE NO. SSE001

Part No	Description	Material
SS601	Shaft	Stainless steel / (AISI 304)
SS602	Coupling	Stainless steel / (AISI 420)
SS603	O-Ring	Rubber
SS604	Coupling Screw	Stainless steel / (AISI 304)
SS605	Suction	Stainless steel / (AISI 304)
SS606	Strainer	Stainless steel / (AISI 304)
SS607	Suction Flange	Stainless steel / (AISI 420)
SS608	Lower Spacer Bottom	Stainless steel / (AISI 304)
SS609	Lower Spacer Top	Stainless steel / (AISI 304)
SS610	First Diffuser	Stainless steel / (AISI 304)
SS611	Impeller	Stainless steel / (AISI 304)
SS612	Lower Up - Thrust Washer	Stainless steel / (AISI 316)
SS612-1	Up-Thrust Ring	Composite
SS613	Impeller Spacer	Stainless steel / (AISI 304)
SS614	Diffuser with upper up-thrush washer	Stainless steel / (AISI 304)
SS615	Diffuser	Stainless steel / (AISI 304)
SS616	Last Diffuser	Stainless steel / (AISI 304)
SS617	Upper Spacer	Stainless steel / (AISI 304)
SS618	Upper Journal Sleeve	Stainless steel / (AISI 304)
SS619	Upper Bearing Guide	Stainless steel / (AISI 304)
SS620	Washer	Stainless steel / (AISI 420)
SS621	Screw	Stainless steel / (AISI 304)
SS622	Check Valve Ring	Stainless steel / (AISI 304)
SS623	Valve Seat	Rubber / Steel
SS624	Valve Cone	Stainless steel / (AISI 304)
SS625	Discharge (2 1/2" Normal)	Stainless steel / (AISI 304)
SS626	Strap	Stainless steel / (AISI 304)
SS627	Strap Nut	Stainless steel / (AISI 304)
SS628	Cable Guard	Stainless steel / (AISI 304)