

Applications

- Air-conditioning system
- Cooling system
- Washing and cleaning system
- Water treatment
- Aquaculture
- Fertilizing/metering system
- Environmental application

Operation conditions

- Liquid temperature:
normal temperature type: -15°C~+70°C
hot water type: -15°C~+105°C
- Ambient temperature: maximum +40°C
- Operation pressure: maximum 10 bar

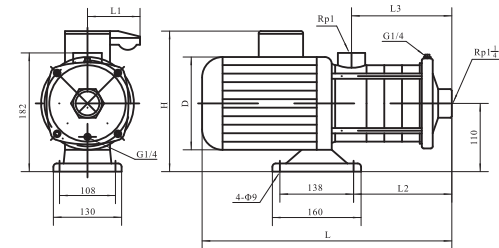
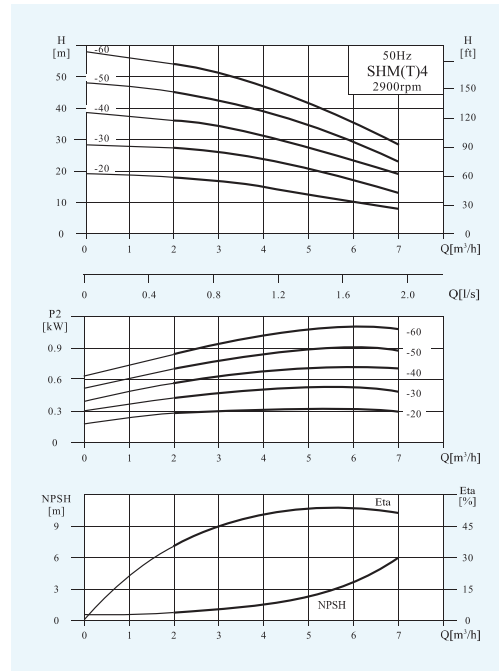
Motor

- Fitted with a totally enclosed, fan-cooled, 2-pole motor
- Enclosure class: IP55
- Insulation class: F
- Supply voltage: 50Hz or 60Hz

Material

- Inlet&outlet chamber: Stainless steel(304/316)
- Impeller: Stainless steel(304/316)
- Shell: Stainless steel(304/316)
- Shaft: Stainless steel(304/316)
- Mechanical seal: Graphite/SIC

Performance Curves



Performance Table

Model	Associated motor		Q (m³/h)	H (m)						
	(kW)	(hp)		1	2	3	4	5	6	7
SHM(T)4-20	0.37	0.55	H (m)	19	18	17	15	12.5	10	7.5
SHM(T)4-30	0.55	0.75		28	27	26	23.5	20.5	17	13
SHM(T)4-40	0.75	1		37.5	36	34	31	27	23	19
SHM(T)4-50	1.1	1.5		47	45	42.5	39	34	29	23
SHM(T)4-60	1.1	1.5		56	54	51	47	41.5	35.5	28

Dimension&Weight

Motor	Model	Specification (mm)						Net Weight (kg)
		L	L1	L2	L3	H	D	
Three phase /Single phase	SHM(T)4-20	329	/96	105	102	215/230	145	12
	SHM(T)4-30	356	/96	132	129	215/230	145	13
	SHM(T)4-40	416	/100	159	156	225/245	170	14
	SHM(T)4-50	455	/100	188	183	225/245	170	16
	SHM(T)4-60	482	/100	215	210	225/245	170	16