



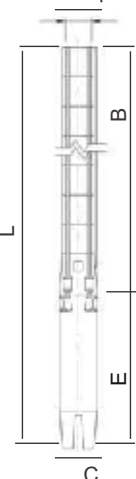
TYPICAL PERFORMANCE CURVE

TESTED ACCORDING TO ISO 9906 Annex A

PERFORMANCE 50Hz

SS636

80mm (3") BSP Pump

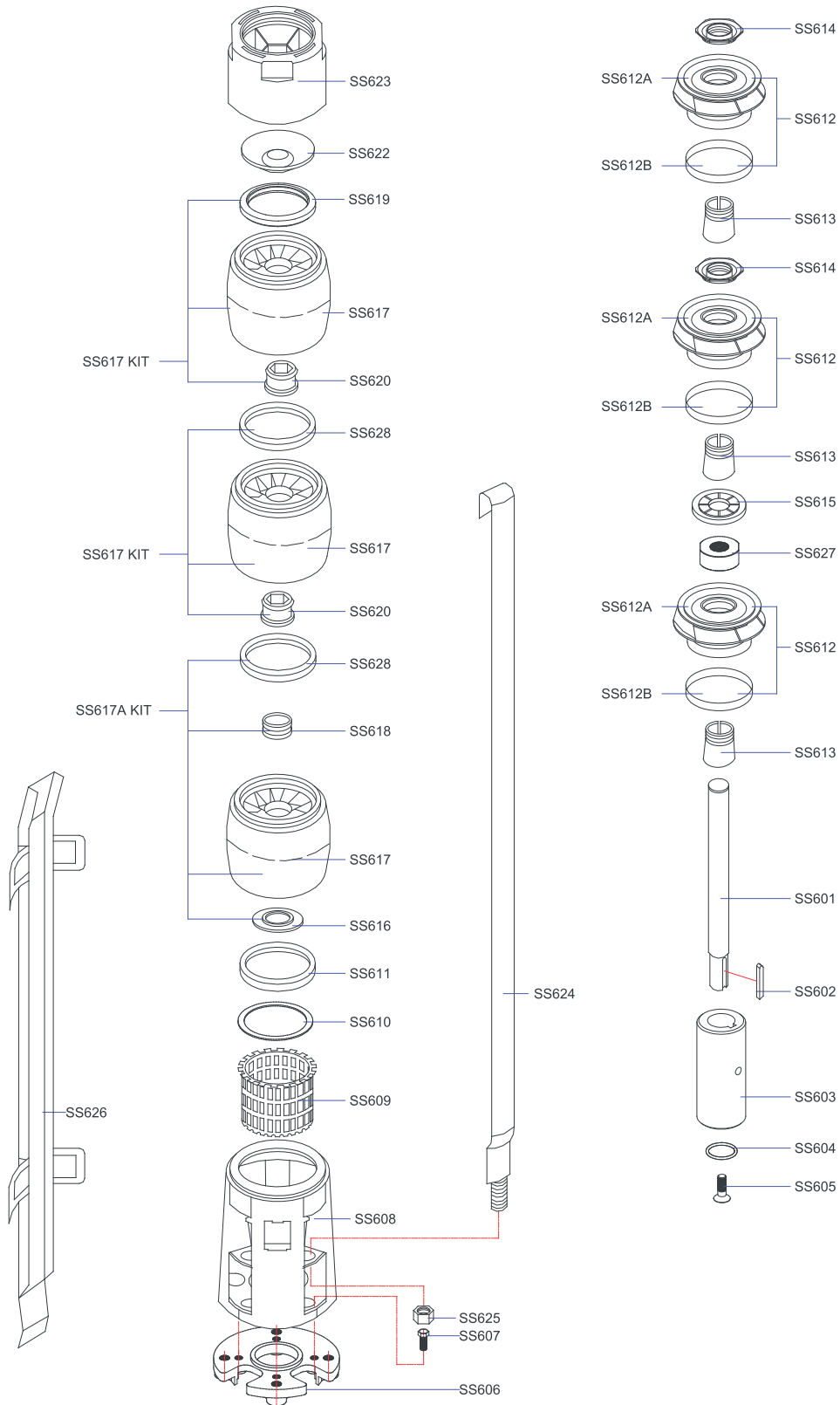


PUMP TYPE	MOTOR kW	DIMENSIONS (mm)														WEIGHT (kg)									
		150mm 100mm (6"-4")	150mm 150mm (6"-6")	150mm 200mm (6"-8")	100mm (4")	150mm (6")	200mm (8")	100mm (4")	150mm (6")	200mm (8")	100mm (4")	150mm (6")	200mm (8")	Ø	Ø	MOTOR			PUMP			TOTAL			
		L	L	L	E	E	E	B	B	B	Ø = C	Ø = C	Ø = C	PUMP	D	100mm (4")	150mm (6")	200mm (8")	150mm 100mm (6"-4")	150mm 150mm (6"-6")	150mm 200mm (6"-8")	150mm 100mm (6"-4")	150mm 150mm (6"-6")	150mm 200mm (6"-8")	
SS 63601	1,1	810	-	-	425	-	-	385	-	-	93	-	-	145	3"	10	-	-	7	-	-	17	-	-	-
SS 63602	2,2	990	-	-	492	-	-	498	-	-	93	-	-	145	3"	14	-	-	9	-	-	23	-	-	-
SS 63603	4	1232	-	-	621	630	-	611	611	-	93	145	-	145	3"	21	46	-	11	11	-	32	57	-	-
SS 63604	4	1345	1354	-	621	630	-	724	724	-	93	145	-	145	3"	21	46	-	14	14	-	35	60	-	-
SS 63605	5,5	1577	1467	-	740	630	-	837	837	-	93	145	-	145	3"	25	46	-	16	16	-	41	62	-	-
SS 63606	7,5	1810	1600	-	860	650	-	950	950	-	93	145	-	145	3"	31	48	-	18	18	-	49	66	-	-
SS 63607	7,5	1923	1713	-	860	650	-	1063	1063	-	93	145	-	145	3"	31	48	-	20	20	-	51	68	-	-
SS 63608	9,2	-	1866	-	-	690	-	-	1776	-	-	145	-	145	3"	-	50	-	-	22	-	-	72	-	-
SS 63609	11	-	2019	-	-	730	-	-	1289	-	-	145	-	145	3"	-	56	-	-	24	-	-	80	-	-
SS 63610	11	-	2132	-	-	730	-	-	1402	-	-	145	-	145	3"	-	56	-	-	26	-	-	82	-	-
SS 63611	15	-	2295	-	-	780	-	-	1515	-	-	145	-	145	3"	-	60	-	-	29	-	-	89	-	-
SS 63612	15	-	2408	-	-	780	-	-	1628	-	-	145	-	145	3"	-	60	-	-	31	-	-	91	-	-
SS 63613	15	-	2571	-	-	830	-	-	1741	-	-	145	-	145	3"	-	66	-	-	33	-	-	99	-	-
SS 63614	15	-	2684	-	-	830	-	-	1854	-	-	145	-	145	3"	-	66	-	-	35	-	-	101	-	-
SS 63615	18,5	-	2847	-	-	880	-	-	1967	-	-	145	-	145	3"	-	72	-	-	37	-	-	109	-	-
SS 63616	18,5	-	2960	-	-	880	-	-	2080	-	-	145	-	145	3"	-	72	-	-	39	-	-	111	-	-
SS 63617	18,5	-	3073	-	-	880	-	-	2193	-	-	145	-	145	3"	-	72	-	-	41	-	-	113	-	-
SS 63618	18,5	-	3186	-	-	880	-	-	2306	-	-	145	-	145	3"	-	72	-	-	43	-	-	115	-	-
SS 63619	22	-	3399	3499	-	980	980	-	2419	2419	-	145	195	145	3"	-	82	121	-	45	45	-	127	166	-
SS 63620	22	-	3528	3478	-	980	980	-	2548	2548	-	145	195	145	3"	-	82	121	-	48	48	-	130	169	-
SS 63621	22	-	3641	3591	-	980	980	-	2661	2661	-	145	195	145	3"	-	82	121	-	50	50	-	132	171	-
SS 63622	30	-	3804	3814	-	1030	1040	-	2774	2774	-	145	195	145	3"	-	88	140	-	53	53	-	141	193	-
SS 63623	30	-	3917	3927	-	1030	1040	-	2887	2887	-	145	195	145	3"	-	88	140	-	55	55	-	143	195	-
SS 63624	30	-	4030	4040	-	1030	1040	-	3000	3000	-	145	195	145	3"	-	88	140	-	57	57	-	145	197	-
SS 63625	30	-	4143	4153	-	1030	1040	-	3113	3113	-	145	195	145	3"	-	88	140	-	59	59	-	147	199	-
SS 63626	30	-	4336	4266	-	1110	1040	-	3226	3226	-	145	195	145	3"	-	98	140	-	61	61	-	159	201	-
SS 63627	30	-	4449	4379	-	1110	1040	-	3339	3339	-	145	195	145	3"	-	98	140	-	63	63	-	161	203	-
SS 63628	30	-	4562	4492	-	1110	1040	-	3452	3452	-	145	195	145	3"	-	98	140	-	65	65	-	163	205	-
SS 63629	30	-	4675	4605	-	1110	1040	-	3565	3565	-	145	195	145	3"	-	98	140	-	67	67	-	165	207	-

PUMP TYPE	MOTOR	m³/h	0	24	27	30	33	36	39	42	45	48	51
	kW		l / sec	0,00	6,67	7,50	8,33	9,17	10,00	10,83	11,67	12,50	13,33
SS 63601	1,1	Total Dynamic Head (TDH)	11	10	9	9	8	8	8	7	6	6	5
SS 63602	2,2		23	19	19	18	17	16	15	14	13	12	11
SS 63603	4		34	29	28	26	25	24	23	21	19	18	16
SS 63604	4		46	39	37	35	34	32	30	28	26	24	21
SS 63605	5,5		57	49	46	44	42	40	38	35	32	30	26
SS 63606	7,5		68	58	56	53	51	48	45	42	39	36	32
SS 63607	7,5		80	68	65	61	59	56	53	49	45	41	37
SS 63608	9,2		91	78	74	70	68	64	60	56	52	47	42
SS 63609	11		103	87	84	79	76	71	68	63	58	53	48
SS 63610	11		114	97	93	88	84	79	75	70	65	59	53
SS 63611	15		126	107	102	97	93	87	83	77	71	65	58
SS 63612	15		137	116	112	105	101	95	90	84	78	71	63
SS 63613	15		148	126	121	114	110	103	98	91	84	77	69
SS 63614	15		160	136	130	123	118	111	105	99	91	83	74
SS 63615	18,5		171	146	139	132	127	119	113	106	97	89	79
SS 63616	18,5		183	155	149	140	135	127	120	113	104	95	85
SS 63617	18,5		194	165	158	149	144	135	128	120	110	101	90
SS 63618	18,5		205	175	167	158	152	143	135	127	117	107	95
SS 63619	22		217	184	177	167	161	151	143	134	123	113	100
SS 63620	22		228	194	186	176	169	159	150	141	130	119	106
SS 63621	22		240	204	195	184	177	167	158	148	136	124	111
SS 63622	30		251	214	205	193	186	175	165	155	143	130	116
SS 63623	30		262	223	214	202	194	183	173	162	149	136	122
SS 63624	30		274	233	223	211	203	191	180	169	156	142	127
SS 63625	30		285	243	232	219	211	199	188	176	162	148	132
SS 63626	30		297	252	242	228	220	206	195	183	169	154	137
SS 63627	30		308	262	251	237	228	214	203	190	175	160	143
SS 63628	30		320	272	260	246	237	222	210	197	182	166	148
SS 63629	30		331	282	270	255	245	230	218	204	188	172	153

DATE: 17/02/2016

CURVE NO. SST008





TYPICAL PERFORMANCE CURVE

TESTED ACCORDING TO ISO 9906 Annex A

PERFORMANCE 50Hz

**SS636-SS642-SS660**

Part No	Description	Material
SS601	Shaft	Stainless steel / (AISI 420)
SS602	Key	Stainless steel / (AISI 304)
SS603	Coupling	Stainless steel / (AISI 420)
SS604	O-Ring	Rubber
SS605	Coupling Screw	Stainless steel / (AISI 304)
SS606	Flange	Stainless steel / (AISI 304)
SS607	Flange Screw	Stainless steel / (AISI 304)
SS608	Support	Stainless steel / (AISI 304)
SS609	Strainer	Stainless steel / (AISI 304)
SS610	Neck Ring Retainer	Stainless steel / (AISI 304)
SS611	Support Neck Ring	Rubber / Steel
SS612A	Impeller	Stainless steel / (AISI 304)
SS612B	Ring Of Impeller	Stainless steel / (AISI 304)
SS613	Split Cone	Stainless steel / (AISI 420)
SS614	Split Cone Nut	Stainless steel / (AISI 304)
SS615	Spacing Washer For Stop Ring	Composite
SS616	Stop Ring	Stainless steel / (AISI 420)
SS617	Diffuser	Stainless steel / (AISI 304)
	Diffuser	Stainless steel / (AISI 304)
SS617A KIT	Bearing	Rubber / Steel
	Neck Ring	Rubber / Steel
	Stop Ring	Stainless steel / (AISI 420)
	Diffuser	Stainless steel / (AISI 304)
SS617 KIT	Bearing	Rubber
	Neck Ring	Rubber / Steel
	Diffuser	Stainless steel / (AISI 304)
SS617 B KIT	Bearing	Rubber
	Valve Seat	Rubber / Steel
SS618	Bearing	Rubber / Steel
SS619	Valve Seat	Rubber / Steel
SS620	Bearing	Rubber
SS622	Valve Cone	Stainless steel / (AISI 304)
SS623	Discharge ( 3" Normal )	Stainless steel / (AISI 304)
SS623-A	Discharge ( NPT - Rp 3 )	Stainless steel / (AISI 304)
SS623-B	Discharge ( 4" Normal )	Stainless steel / (AISI 304)
SS623-C	Discharge ( NPT - Rp 4 )	Stainless steel / (AISI 304)
SS624	Strap	Stainless steel / (AISI 304)
SS625	Strap Nut	Stainless steel / (AISI 304)
SS626	Cable Guard	Stainless steel / (AISI 304)
SS627	Lock Nut	Stainless steel / (AISI 420)
SS628	Neck Ring	Rubber / Steel

DATE: 17/02/2016

CURVE NO. SSS004



Franklin Electric