

Applications

- Water supply
- Industry pressure boosting
- Industry liquid transfer
- Water treatment
- Irrigation

Motor

- Fitted with a totally enclosed fan-cooled, 2-pole motor
- Enclosure class: IP55
- Insulation class: F
- Supply voltage: 50Hz or 60Hz

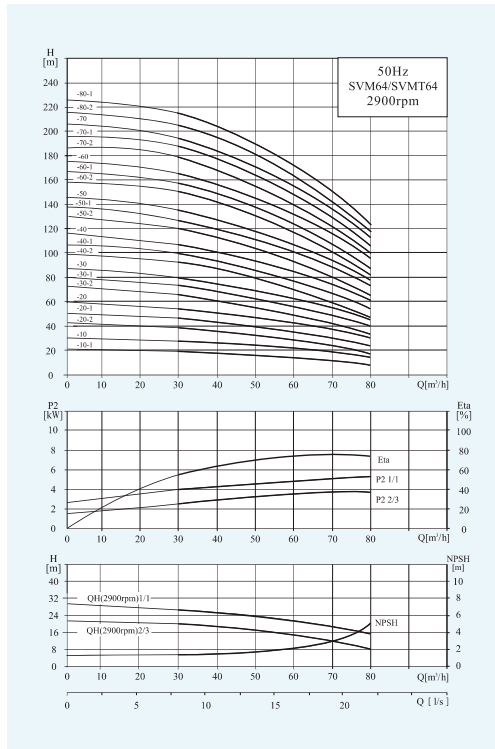
Operation conditions

- Thin, clean, non-explosive liquids, not containing solid particles or fibers liquid
- Liquid temperature: normal temperature type: -15°C~+70°C hot water type: -15°C~+105°C
- Ambient temperature: maximum +40°C
- Altitude: maximum 1000m

Material

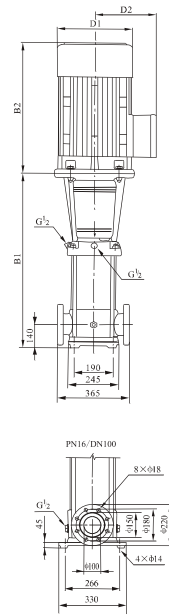
- Inlet&outlet chamber: Cast iron/Stainless steel(304/316)
- Impeller: Stainless steel(304/316)
- Shell: Stainless steel(304/316)
- Shaft: Stainless steel(304/316)
- Coupling: Ductile iron
- Bearing: Tungsten carbide
- Mechanical seal: Tungsten carbide/Graphite

Performance Curves



Performance Table

Model	Associated motor(kw)	Q (m³/h)	H (m)							
			30	40	50	60	64	70	80	
SVM64-10-1	4.0	H (m)	19	18	16	14	13	11	8	
SVM64-10	5.5		27	25	23	21	20	18	15	
SVM64-20-2	7.5		39	36	33	29	27	23	17	
SVM64-20-1	11		46	44	40	36	34	30	24	
SVM64-20	11		53	51	47	43	41	37	30	
SVM64-30-2	15		66	62	56	50	47	41	32	
SVM64-30-1	15		73	69	63	57	54	48	39	
SVM64-30	18.5		80	76	70	64	61	55	46	
SVM45-40-2	18.5		92	87	80	71	67	60	47	
SVM64-40-1	22		100	94	87	78	74	67	54	
SVM64-40	22		107	101	94	85	81	74	61	
SVM64-50-2	26		121	114	105	95	89	80	64	
SVM64-50-1	26		128	121	112	102	96	87	71	
SVM64-50	30		136	129	119	109	103	94	78	
SVM64-60-2	30		150	142	131	118	111	101	81	
SVM64-60-1	37		157	149	138	125	118	108	88	
SVM64-60	37		164	156	145	132	125	115	95	
SVM64-70-2	37		179	169	156	141	133	121	99	
SVM64-70-1	37		186	176	163	148	141	128	106	
SVM64-70	45		193	183	170	155	148	135	112	
SVM64-80-2	45	207	196	182	164	156	142	116		
SVM64-80-1	45	215	203	189	171	163	149	123		



Dimension & Weight

Model	Size (mm)					Net Weight(kg)
	B1	B2	B1+B2	D1	D2	
SVM64-10-1	561	355	916	230	188	93
SVM64-10	561	390	951	260	208	105
SVM64-20-2	644	390	1034	260	208	110
SVM64-20-1	754	500	1254	330	255	182
SVM64-20	754	500	1254	330	255	182
SVM64-30-2	836	500	1336	330	255	196
SVM64-30-1	836	500	1336	330	255	197
SVM64-30	836	550	1386	330	255	221
SVM64-40-2	919	550	1469	330	255	225
SVM64-40-1	919	575	1494	360	285	258
SVM64-40	919	575	1494	360	285	258
SVM64-50-2	1001	575	1576	360	285	276
SVM64-50-1	1001	575	1576	360	285	276
SVM64-50	1001	650	1651	400	310	320
SVM64-60-2	1084	650	1734	400	310	325
SVM64-60-1	1084	650	1734	400	310	349
SVM64-60	1084	650	1734	400	310	349
SVM64-70-2	1166	650	1816	400	310	353
SVM64-70-1	1166	650	1816	400	310	353
SVM64-70	1166	685	1851	460	340	420
SVM64-80-2	1248	685	1933	460	340	424
SVM64-80-1	1248	685	1933	460	340	424