

Applications

- Water supply
- Industry pressure boosting
- Industry liquid transfer
- Water treatment
- Irrigation

Motor

- Fitted with a totally enclosed fan-cooled, 2-pole motor
- Enclosure class: IP55
- Insulation class: F
- Supply voltage: 50Hz or 60Hz

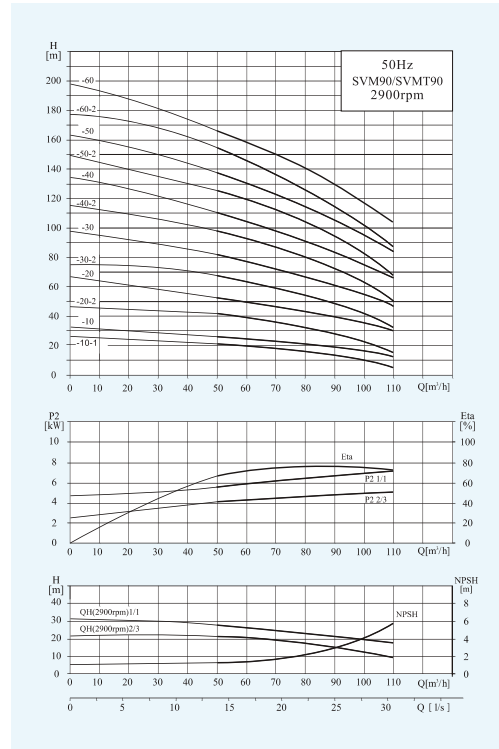
Operation conditions

- Thin, clean, non-explosive liquids, not containing solid particles or fibers liquid
- Liquid temperature: normal temperature type: -15°C~+70°C hot water type: -15°C~+105°C
- Ambient temperature: maximum +40°C
- Altitude: maximum 1000m

Material

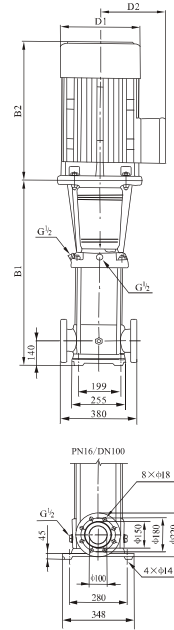
- Inlet&outlet chamber: Cast iron/Stainless steel(304/316)
- Impeller: Stainless steel(304/316)
- Shell: Stainless steel(304/316)
- Shaft: Stainless steel(304/316)
- Coupling: Ductile iron
- Bearing: Tungsten carbide
- Mechanical seal: Tungsten carbide/Graphite

Performance Curves



Performance Table

Model	Associated motor(kW)	Q (m³/h)	H (m)						
			50	60	70	80	90	100	110
SVM90-10-1	5.5	H (m)	22	19	17	16	13	10	6
SVM90-10	7.5		25	24	22	21	19	16	12
SVM90-20-2	11		41	39	36	32	28	22	15
SVM90-20	15		53	50	47	44	40	36	30
SVM90-30-2	18.5		68	65	60	55	49	41	32
SVM90-30	22		81	77	72	67	62	55	48
SVM90-40-2	26		98	93	87	80	72	62	50
SVM90-40	30		110	105	100	92	84	76	66
SVM90-50-2	37		126	120	113	104	93	81	68
SVM90-50	37		139	131	124	115	106	94	83
SVM90-60-2	45		155	148	139	129	117	102	86
SVM90-60	45		168	160	150	141	130	117	103



Dimension&Weight

Model	Size (mm)					Net Weight(kg)
	B1	B2	B1+B2	D1	D2	
SVM90-10-1	571	390	961	260	208	105
SVM90-10	571	390	961	260	208	110
SVM90-20-2	773	500	1273	330	255	181
SVM90-20	773	500	1273	330	255	192
SVM90-30-2	865	550	1415	330	255	215
SVM90-30	865	575	1440	360	285	252
SVM90-40-2	957	575	1532	360	285	271
SVM90-40	957	650	1607	400	310	312
SVM90-50-2	1049	650	1699	400	310	336
SVM90-50	1049	650	1699	400	310	336
SVM90-60-2	1141	685	1826	460	340	407
SVM90-60	1141	685	1826	460	340	407