

# BOREHOLE DC SOLAR

## Pumps HR(SS304) & HRI(SS201) (3")



The HR & HRI solar borehole range are manufactured with a permanent magnet, brush-less motor technology that generates better efficiency and performance. This product is ideal for application in remote arid areas with limited or unreliable power supply. The compact and lightweight design, ensures that these units are suitable for mobile applications.

### Product Feature:

- Permanent magnet, brush-less motor, saving energy and offering maximum efficiency.
- NSK bearing with alloy mechanical seal.
- Intelligent water shortage protection.
- MPPT function offers higher utilization rate of solar energy.
- Automatic Stop | Start.
- Soft start protection.
- Over current protection.
- Max Water Submersion Depth : 50m
- Max Flow: 1600L/h
- Max Head: 180m
- Pump Isolation IP68
- Motor Speed 500 - 4000rpm
- Discharge 20mm
- Power ` 210 - 1200watt
- Voltage DC24 - DC72

### Application:

Suitable for installations in boreholes, wells, rivers, dams and tanks with minimum ID Ø 80mm.

### Working Conditions:

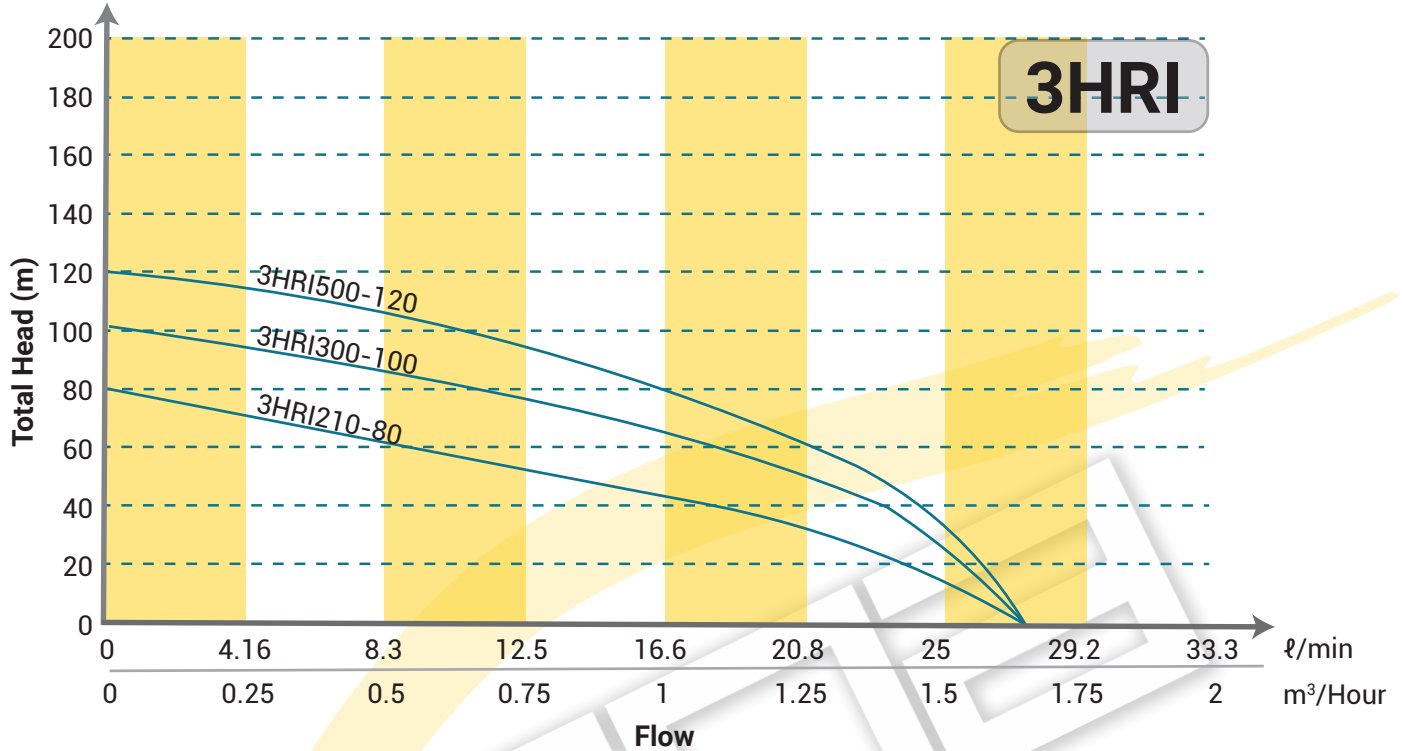
- Non-corrosive water with a volume ratio of sand content not exceeding 1% and the particle size not exceeding 0.5mm.
- HRI Series not recommended for brackish water.
- Max pumped liquid temperature: 40°C
- PH capability: 6.5 - 8.5
- Max control box temperature: 60°C

### Technical Summary:

MODEL	DC MOTOR VOLTAGE (V)	MAX INPUT DC V.O.C (V)	MAX INPUT AMPERAGE	POWER (WATT)	MAX FLOW (m³/h)	MAX HEAD (m)	OUTLET (INCH)	CABLE SIZE
3HRI210-80	24	48	17	210	1.6	80	3/4"	3 Core 2mm²
3HRI300-100	48	96	17	300	1.6	100	3/4"	3 Core 2mm²
3HRI500-120	48	96	17	500	1.6	120	3/4"	3 Core 2mm²

MODEL	DC MOTOR VOLTAGE (V)	MAX INPUT DC V.O.C (V)	MAX INPUT AMPERAGE	POWER (WATT)	MAX FLOW (m³/h)	MAX HEAD (m)	OUTLET (INCH)	CABLE SIZE
3HR210-80	24	48	17	210	1.6	80	3/4"	3 Core 2mm²
3HR300-100	48	96	17	300	1.6	100	3/4"	3 Core 2mm²
3HR500-120	48	96	17	500	1.6	120	3/4"	3 Core 2mm²
3HR750-140	72	144	17	750	1.6	140	3/4"	3 Core 2mm²
3HR1200-180	72	144	17	1200	1.6	180	3/4"	3 Core 2mm²

### Performance Data:



Model	Flow	l/min	0	4.16	8.3	12.5	16.6	20.8	25	29.16
		l/hour	0	250	500	750	1000	1250	1500	1750
3HRI210-80	HEAD	80	75	65	55	43	30	18	0	
3HRI300-100		100	95	85	78	65	45	27	0	
3HRI500-120		120	110	105	90	75	60	30	0	

### Included in Kit:

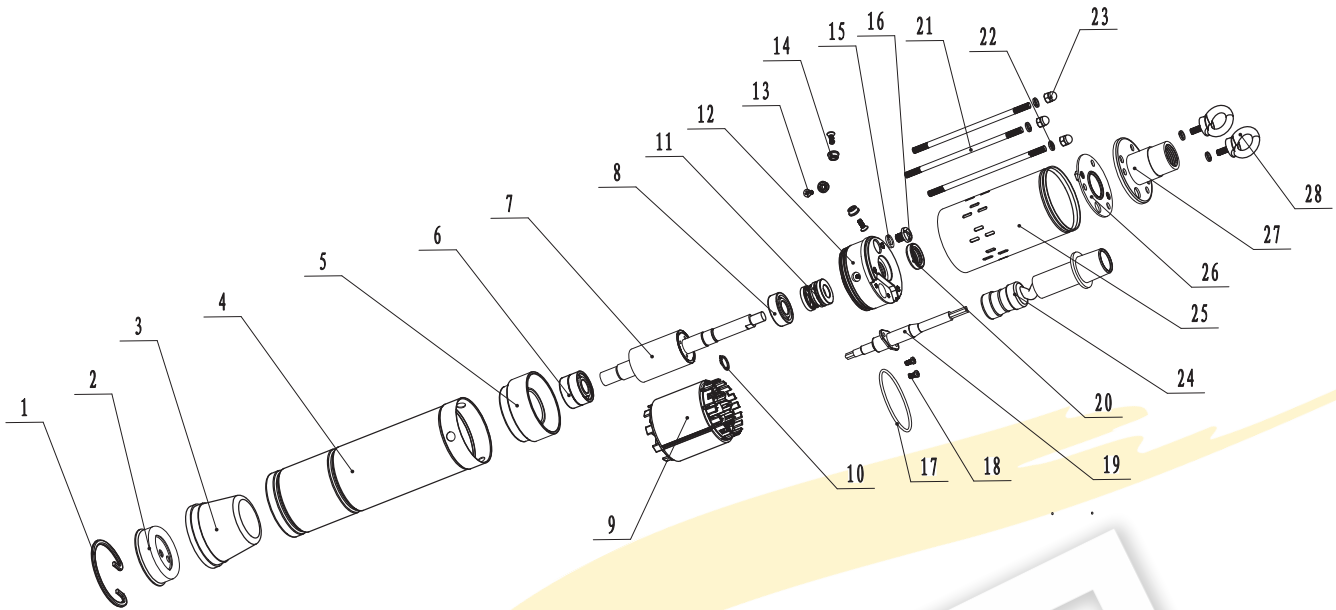
PUMP & MOTOR	CONTROL BOX	PUMP PROBE	LEVEL PROBE	SWAGE NIPPLE	ROTOR SET	CLAMP
						
HEAT SHRINK	HEAT SHRINK	SEALANT TAPE	PVC TAPE	THREAD TAPE	MOUNTING BOLTS	FUSE
						
FERRULE	SNAP HOOK	ALLEN KEY	LUG	SCREW DRIVER	BRACKET SCREWS	BRACKET
						

# BOREHOLE DC SOLAR

## Pumps HRI(SS201) 3"



### EXPLODED VIEW:



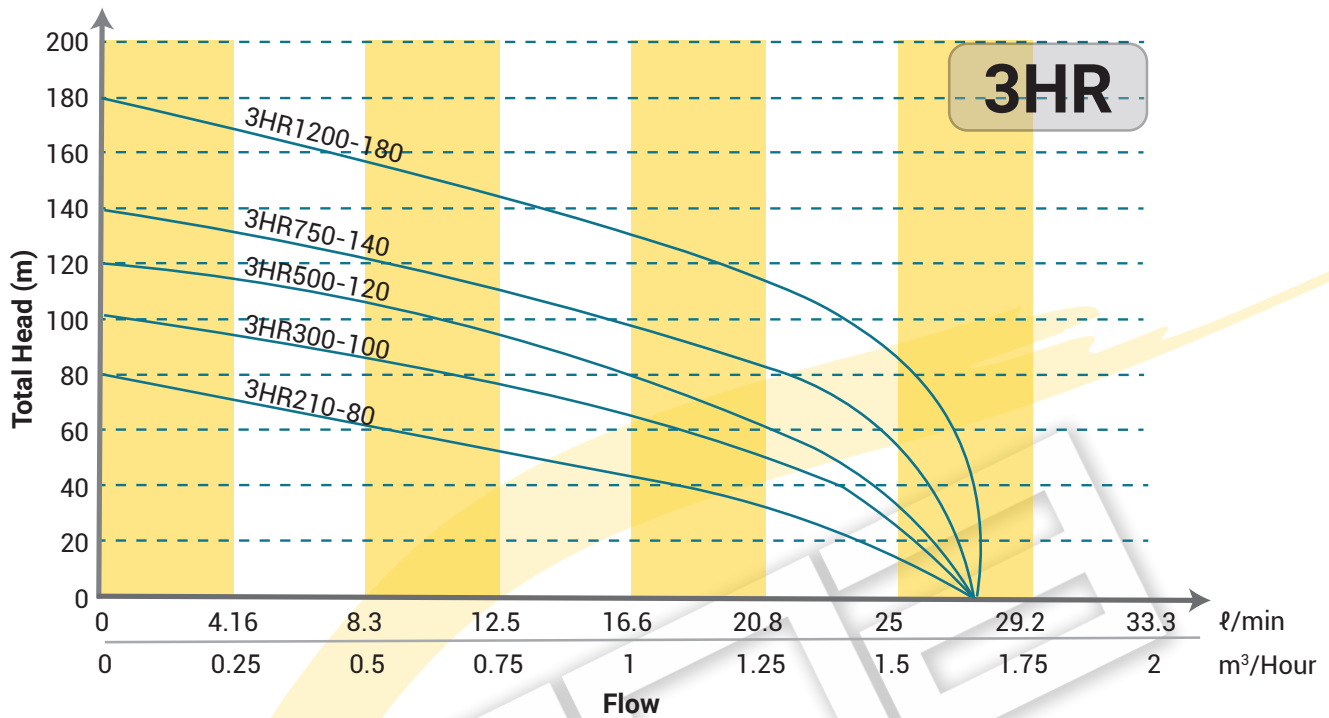
No	Part	Material	QTY	No	Part	Material	QTY
1	MOTOR BASE CIRCLIP	304SS	1	16	SCREW	SS304	1
2	MOTOR BASE	304SS	1	17	O RING	NBR	1
3	BLADDER	NBR	1	18	SCREW	SS304	1
4	MOTOR CASING	SS201	1	19	CABLE GLAND		1
5	BOTTOM CHUCK	ALU	1	20	OIL SEAL	NBR	2
6	BEARING	NSK	2	21	SCREW	SS304	1
7	ROTOR		1	22	SPRING WASHER	SS304	5
8	BEARING	NSK	1	23	SCREW	SS304	3
9	STATOR		1	24	HELICAL ROTOR		1
10	CIRCLIP		1	25	PUMP CASING	SS201	1
11	MECHANICAL SEAL	CAR/CER	1	26	COVER	SS201	1
12	OIL CYLINDER	SS201	1	27	OUTLET	SS201	1
13	SCREW	SS304	3	28	HANGER	SS201	1
14	SEAL RING	SS304	1				
15	GASKET	NBR	1				



### 3 HRI 210-80

- Max Head
- Watt
- Model SS201
- Pump Diameter

### Performance Data:



Model	Flow	l/min	0	4.16	8.3	12.5	16.6	20.8	25	29.16	33.33
		l/hour	0	250	500	750	1000	1250	1500	1750	2000
3HR210-80	HEAD	80	75	61	50	42	31	19	0		
3HR300-100		100	95	85	78	65	50	28	0		
3HR500-120		120	110	105	95	80	60	35	0		
3HR750-140		140	130	120	110	95	85	55	0		
3HR1200-180		180	168	155	145	130	110	85	0		

### Included in Kit:

PUMP & MOTOR	CONTROL BOX	PUMP PROBE	LEVEL PROBE	SWAGE NIPPLE	ROTOR SET	CLAMP
						
HEAT SHRINK	HEAT SHRINK	SEALANT TAPE	PVC TAPE	THREAD TAPE	MOUNTING BOLTS	FUSE
						
FERRULE	SNAP HOOK	ALLEN KEY	LUG	SCREW DRIVER	BRACKET SCREWS	BRACKET
						