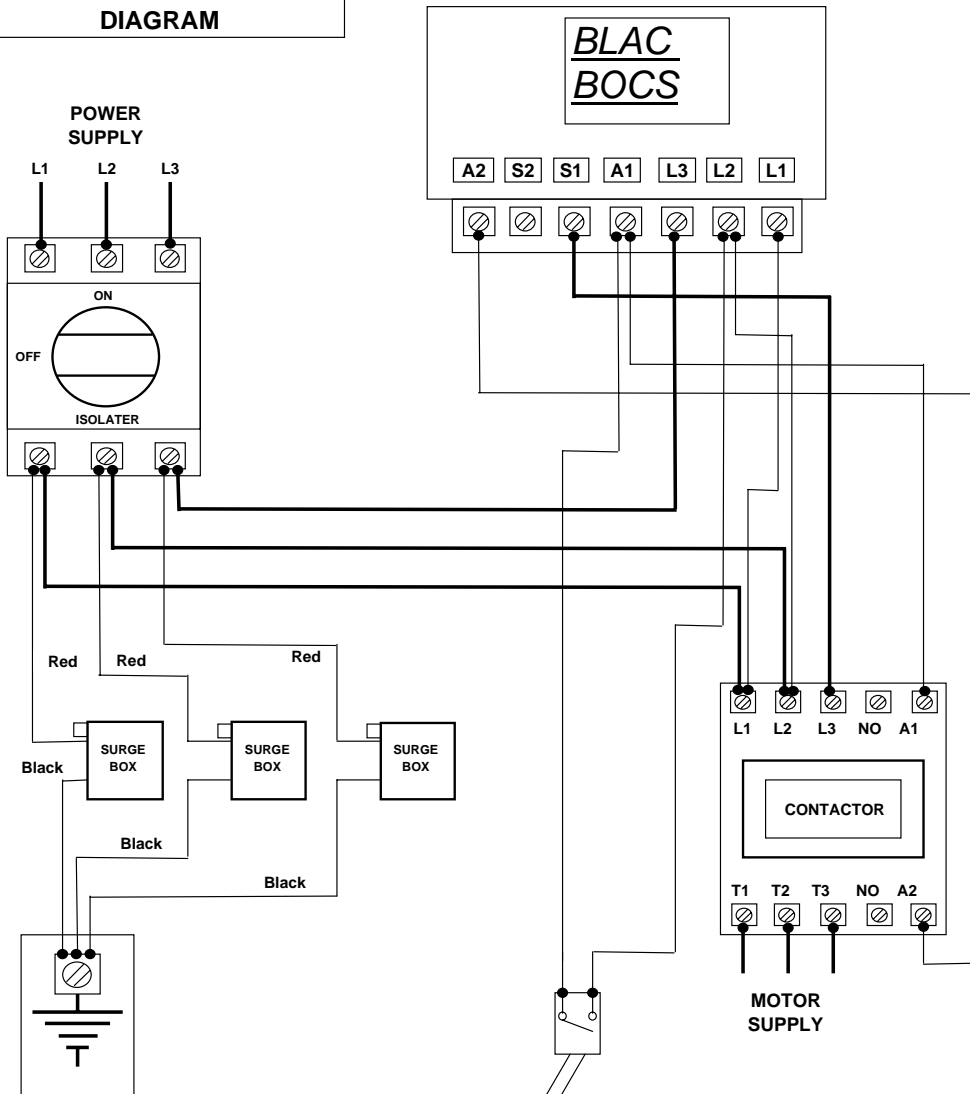


**0.37 kW to 5.5 kW 400V
CONTROL BOX PLUS
INTERNAL WIRING
DIAGRAM**



IMPORTANT:

- INTENDED AS A WIRING GUIDE ONLY.
- FOR ELECTRICAL COMPLIANCE REFER TO LOCAL ELECTRICAL CODES SUCH AS SANS 0142 ETC.
- FOR DEVELOPMENT, MAINTENANCE AND MANAGEMENT OF GROUNDWATER RESOURCE COMPLIANCE REFER TO SANS 10299.
- FOR **BLAC BOCS** OPERATION AND LIGHT INDICATION REFER TO YOUR **BLAC BOCS** MANUAL OR FASP FIELD SERVICE GUIDE & ELECTRICAL INSTRUMENT KIT MANUAL.

Note:

PLEASE NOTE THAT THERE ARE TWO SIZES OFF CONTACTORS IN THIS PRODUCT RANGE:
0.37 kW to 3.75 kW
and
4 kW to 5.5 kW

TECHNICAL SPECIFICATIONS

Voltage - Nominal	400VAC 50Hz
Voltage - Operating	-20% to +15%
Voltage - Starting	-15% to +20%
Operating Temperature	- 5 to + 60 degrees celsius
Overload Control	Trip time varies with severity of overload
Under Load Control	Approximate 70% of normal shaft load
Reset On Dry Run	Runtime is automatically matched to water available for pumping
Reset On Overload	Auto reset after first two overloads with 15 minute delay, then reset by power-up with 90 second delay
Switch Control	ISOLATOR: Used for applying power to control box only - not recommended for repeated on/off switching activity. ON/OFF, PRESSURE, FLOAT or other type of switch: Intermittent starting and stopping of the pump/motor unit.



Franklin Electric
South Africa (Pty) Ltd

Part Number										
0.37 Kw										
2	9	0	3	7	0	4	0	0	1	
0.56 kW										
2	9	0	3	7	0	4	0	0	2	
0.75 kW										
2	9	0	3	7	0	4	0	0	3	
1.1 kW										
2	9	0	3	7	0	4	0	0	4	
1.5 kW										
2	9	0	3	7	0	4	0	0	5	
2.2 kW										
2	9	0	3	7	0	4	0	0	6	
3.0 kW										
2	9	0	3	7	0	4	0	0	9	
3.75 kW										
2	9	0	3	7	0	4	0	0	7	
4.0 kW										
2	9	0	3	7	0	4	0	1	0	
5.5 kW										
2	9	0	3	7	0	4	0	0	8	
Drawn	BE									
Approved	LVDM									
Date	12-Oct-05									
Dwg Type	Schematic									
Rev	0									
<p align="center">BLAC BOCS 0.37- 5.5 kW Control Box Plus Manual On/Off 400V</p>										